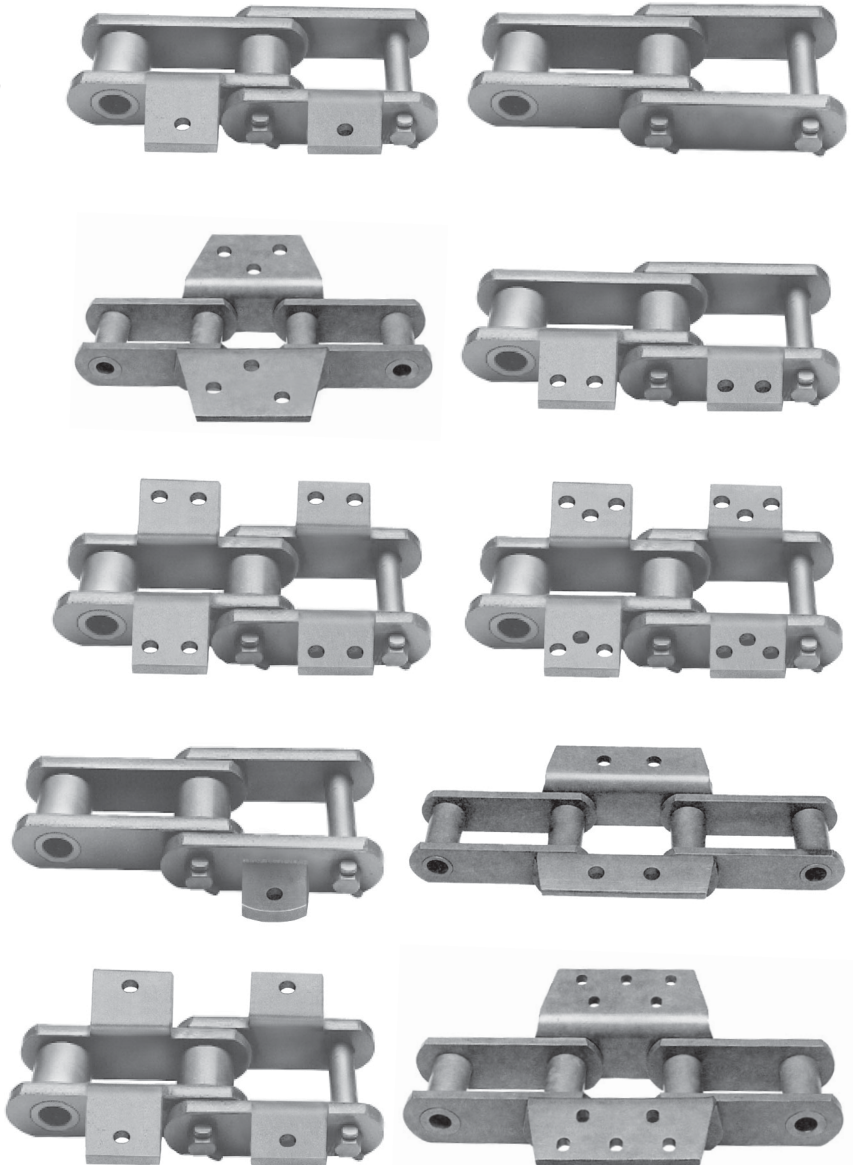


Promac steel bushed chain is ideal for operating under extremely gritty or abrasive conditions and for elevators where centers are widely spaced. This chain is often referred to as "Steel Bushed" or "Rollerless."

Promac steel bushed chain is made in accordance with manufacturer's standards and may be interchanged with standard steel bushed chain of other manufacturers.

These chains match the best combination of:

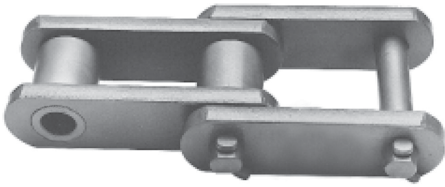
- Heat Treatment
- Raw Material
- Press Fits to produce a strong chain that won't break unexpectedly in an elevator application.



Steel Bushed Interchange

Promac #	Rex #	Jeffrey #	US Tsubaki #	Allied Locke #
188	SBS-188	6188	188	SS-181
131	SBS-131	6131	131	SS-131
102-B	SBS-102-B	6102-BM	102-B	SS-102-B
102 1/2	SBS-102 1/2	6102 1/2	102 1/2	
111	SBS-111	6111M	111	SS-111
110	SBS-110	6110MB	110	SS-110
856	SBX-856	6856M	4856	SS-856
857	SBX-2857	6867	4857	SS-857
859	SBX-2859	6869	4859	SS-859
150-X	SBS-150 plus	6150PM	150-X	SS-150+
864	SBX-2864	6864	4864	SS-864

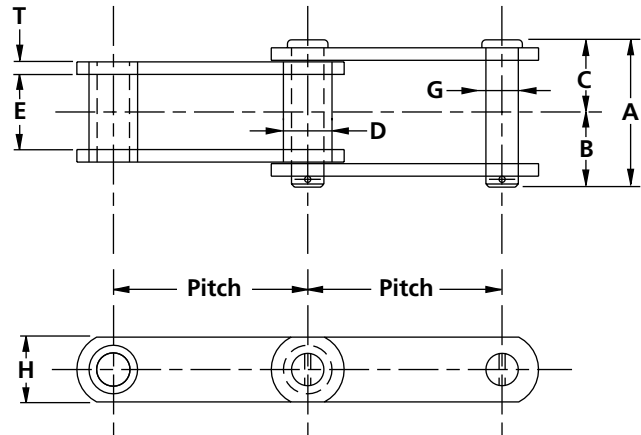
Steel Bushed Plain Chain



Promac steel bushed chain is designed to operate under gritty or abrasive conditions, such as bucket elevators.

Key qualities are:

- High quality steel machined into a stud bushing that is case hardened and heat treated to extend the wear life.
- Pins are designed to the proper dimensions and heat treatment, for longer wear resistance and core toughness to resist impact.
- Assembled with high interference fit and consistent set down for greater fatigue strength and dimension integrity.



Steel Bushed Plain Chain Specifications

All dimensions are inches unless otherwise indicated

Chain No.	Pitch	Width				Bushing			Pin			Sidebar			Avg. Ult. Stgth. (lbs.)	Max. Work Load (lbs.)	Approx. Wgt. (lbs./ft.)
		Overall	Pin End to CL	Pin Head to CL	Inside	Dia.	Sty. ¹	Matl. ²	Dia.	Matl. ²	Sty. ³	Height	Thick	Matl. ²			
		A	B	C	E	D			G			H	T				
188	2.609	2.69	1.44	1.25	1.06	.88	P	CCH	.50	CHT	A	1.13	.25	CHT	25,000	2,750	3.8
131	3.075	3.53	1.88	1.66	1.31	1.25	P	CCH	.63	CHT	A	1.50	.38	CHT	40,000	4,500	7.5
102B	4.000	4.31	2.28	2.03	2.13	1.00	P	CCH	.63	ACH	A	1.50	.38	CHT	40,000	6,300	6.9
102 1/2	4.040	4.75	2.50	2.25	2.25	1.38	P	CCH	.75	CCH	A	1.75	.38	CHT	50,000	8,850	9.4
111	4.760	5.06	2.69	2.38	2.63	1.44	P	CCH	.75	CCH	A	2.00	.38	CHT	50,000	8,850	10.2
110	6.000	4.31	2.28	2.03	2.13	1.25	P	CCH	.63	CCH	A	1.50	.38	CHT	40,000	6,300	6.3
856	6.000	6.13	3.25	2.88	3.00	1.75	R	ACH	1.00	AHTH	K	2.50	.50	AHT	145,000	14,000	16.5
857	6.000	6.13	3.25	2.88	3.00	1.75	R	ACH	1.00	AHTH	K	3.25	.50	AHT	175,000	14,000	21.0
859	6.000	7.38	3.81	3.56	3.75	2.38	R	ACH	1.25	AHTH	K	4.00	.63	AHT	275,000	21,800	34.0
150X	6.050	6.41	3.38	3.03	3.31	1.75	P	ACH	1.00	ACH	A	2.50	.50	CHT	100,000	15,100	16.6
864	7.000	7.38	3.81	3.56	3.75	2.38	R	ACH	1.25	AHTH	K	4.00	.63	AHT	275,000	21,800	31.0

1) Bushing style: P = Double flat; R = Full-round.

2) Material: CHT = Carbon heat treated; CCH = carbon case hardened; AHT = Alloy heat treated; ACH = Alloy case hardened; AHTIH = Alloy heat treated induction hardened.

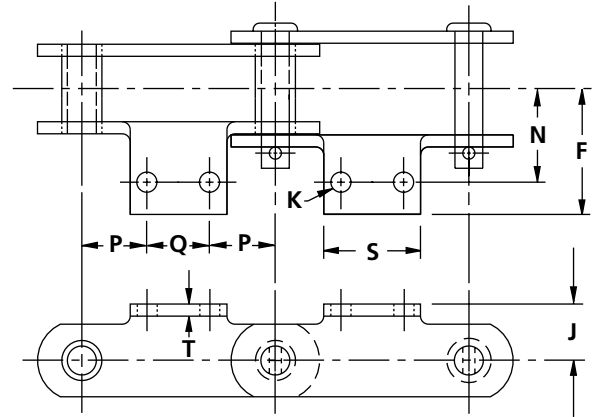
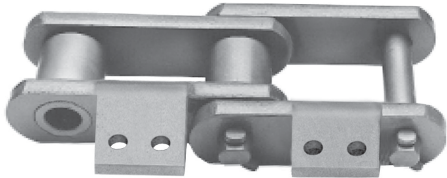
3) Pin style: K = Full round; A = Double flat.

Dimensions shown are subject to change. Obtain certified prints for design and construction.

Promac steel bushed chain is designed to operate under gritty or abrasive conditions, such as bucket elevators.

Key qualities are:

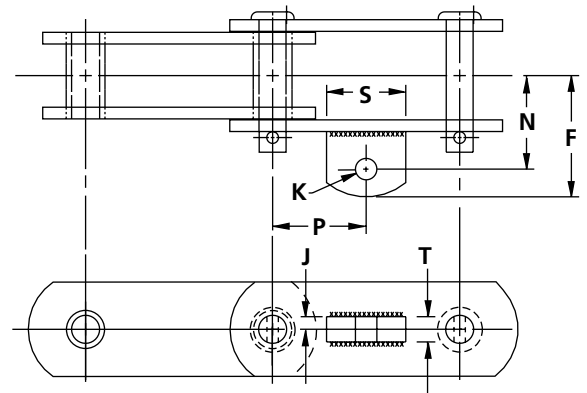
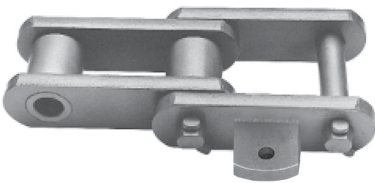
- High quality steel machined into a stud bushing that is case hardened and heat treated to extend the wear life.
- Pins are designed to the proper dimensions and heat treatment, for longer wear resistance and core toughness to resist impact.
- Assembled with high interference fit and consistent set down for greater fatigue strength and dimension integrity.



A-2 Attachment Specifications

All dimensions are inches unless otherwise indicated

Attachment Number	Chain Number	Dimensions								Approx. Wgt. (lbs./ft.)
		N	Q	J	S	F	P	Bolt Diameter K	T	
A-2	188	2.09	1.25	.81	2.13	2.61	.68	.31	.25	4.8
A-2	131	2.06	1.50	1.13	2.88	2.91	.78	.50	.38	8.9
A-2	102B	2.66	1.75	1.00	2.81	3.34	1.30	.38	.38	8.0
A-2	111	3.13	2.31	1.50	3.63	4.13	1.22	.50	.38	12.4
A-2	110	2.66	1.75	1.00	2.89	3.32	2.13	.38	.38	7.5



A-22 & A-42 Attachment Specifications

All dimensions are inches unless otherwise indicated

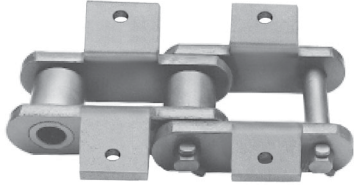
Attachment Number	Chain Number	Dimensions							Approx. Wgt. (lbs./ft.)
		N	J	S	F	P	Bolt Diameter K	T	
A-22 & A-42	188	1.78	.19	1.25	2.38	1.19	.38	.38	4.8
A-22 & A-42	131	3.63	.16	1.25	3.50	1.53	.38	.38	8.4
A-22 & A-42	102B	3.13	.16	1.25	3.88	2.00	.38	.31	7.8
A-22 & A-42	111	3.38	.19	1.25	4.13	2.38	.50	.38	10.8
A-22 & A-42	110	3.13	.19	2.00	4.13	3.00	.50	.38	7.1

Dimensions shown are nominal. Obtain certified prints for design and construction.

Promac steel bushed chain is designed to operate under gritty or abrasive conditions, such as bucket elevators.

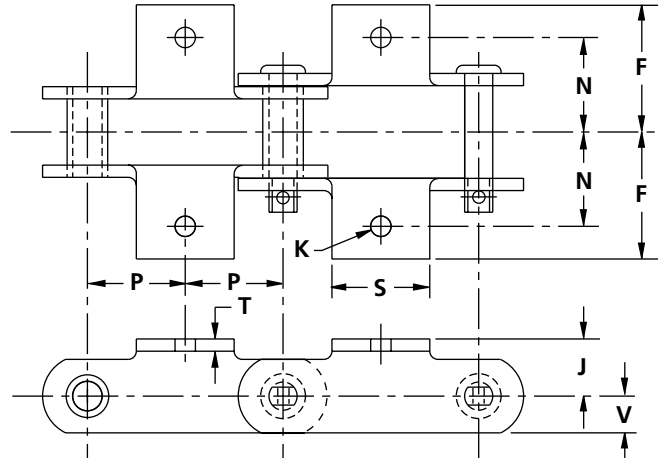
Key qualities are:

- High quality steel machined into a stud bushing that is case hardened and heat treated to extend the wear life.
- Pins are designed to the proper dimensions and heat treatment, for longer wear resistance and core toughness to resist impact.
- Assembled with high interference fit and consistent set down for greater fatigue strength and dimension integrity.



Steel Bushed Chain

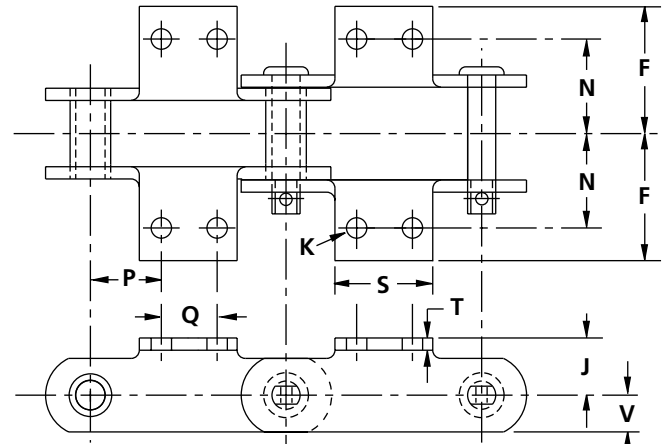
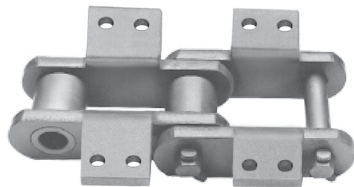
K-1, K-2 & K-22 Attachments



All dimensions are inches unless otherwise indicated

K-1 Attachment Specifications

Attachment Number	Chain Number	Dimensions								Approx. Wgt. (lbs./ft.)
		N	F	S	P	Bolt Diameter K	J	T	V	
K-1	188	1.88	2.61	2.13	1.30	.38	.81	.25	.56	5.8
K-1	131	2.06	3.02	1.31	1.54	.50	1.00	.38	.75	10.2
K-1	102B	2.38	3.34	2.81	2.00	.38	1.00	.38	.75	9.0
K-1	111	3.13	3.75	3.63	2.38	.50	1.50	.38	1.00	15.2



All dimensions are inches unless otherwise indicated

K-2 Attachment Specifications

Attachment Number	Chain Number	Dimensions								Approx. Wgt. (lbs./ft.)	
		N	F	Q	S	P	Bolt Diameter K	J	T		V
K-2	188	2.09	2.61	1.25	2.13	.68	.31	.81	.25	.56	5.8
K-2	131	2.06	2.91	1.50	2.88	.78	.50	1.13	.38	.75	10.2
K-2	102B	2.66	3.34	1.75	2.81	1.13	.38	1.00	.38	.75	9.0
K-2	110	2.66	3.32	1.75	2.88	2.13	.38	1.00	.38	.75	8.6
K-2	111	3.13	4.13	2.31	3.63	1.22	.50	1.50	.38	1.00	15.2
K-2	150X	3.75	4.78	2.75	4.50	1.66	.50	1.88	.50	1.25	23.0
K-2	856	3.16	4.25	2.25	4.25	1.88	.50	1.88	.50	1.25	23.0

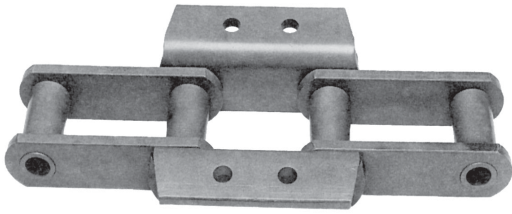
K-22 Attachment Specifications

Attachment Number	Chain Number	Dimensions								Approx. Wgt. (lbs./ft.)	
		N	F	Q	S	P	Bolt Diameter K	J	T		V
K-22	102-1/2	2.66	3.27	1.75	3.13	1.16	.50	1.13	.38	.88	24.0
K-22	111	3.13	4.13	2.31	3.63	1.23	.38	1.50	.38	1.00	15.2
K-22	856	3.16	4.25	2.25	4.25	1.88	.63	1.88	.50	1.25	23.0

Dimensions shown are nominal. Obtain certified prints for design and construction.

Steel Bushed Chain

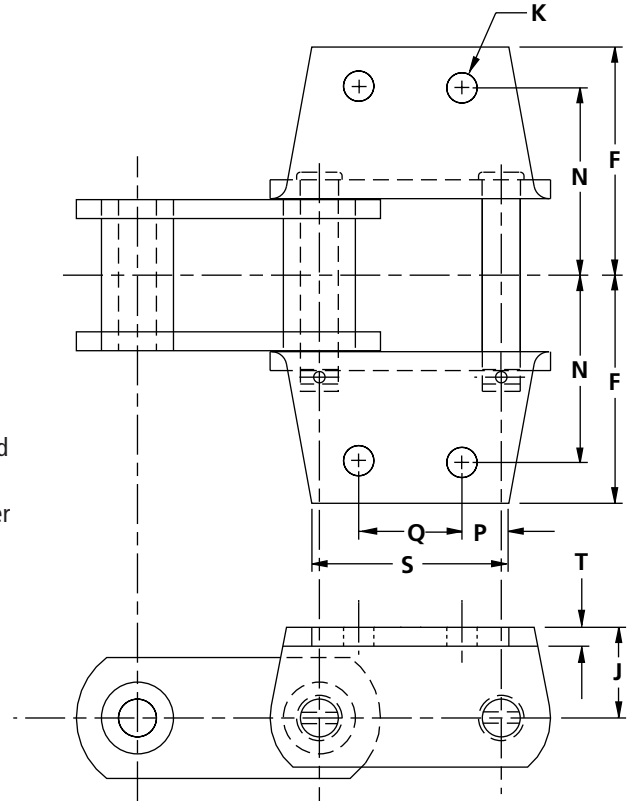
K-24 Attachments



Promac steel bushed chain is designed to operate under gritty or abrasive conditions, such as bucket elevators.

Key qualities are:

- High quality steel machined into a stud bushing that is case hardened and heat treated to extend the wear life.
- Pins are designed to the proper dimensions and heat treatment, for longer wear resistance and core toughness to resist impact.
- Assembled with high interference fit and consistent set down for greater fatigue strength and dimension integrity.



K-24 Attachment Specifications

All dimensions are inches unless otherwise indicated

Attachment Number	Chain Number	Dimensions								Approx. Weight (lbs./ft.)
		N	F	Q	S	P	Bolt Diameter K	J	T	
K-24	856	3.63	4.75	2.50	7.25	1.75	.63	1.88	.50	27.5

Dimensions shown are nominal. Obtain certified prints for design and construction.

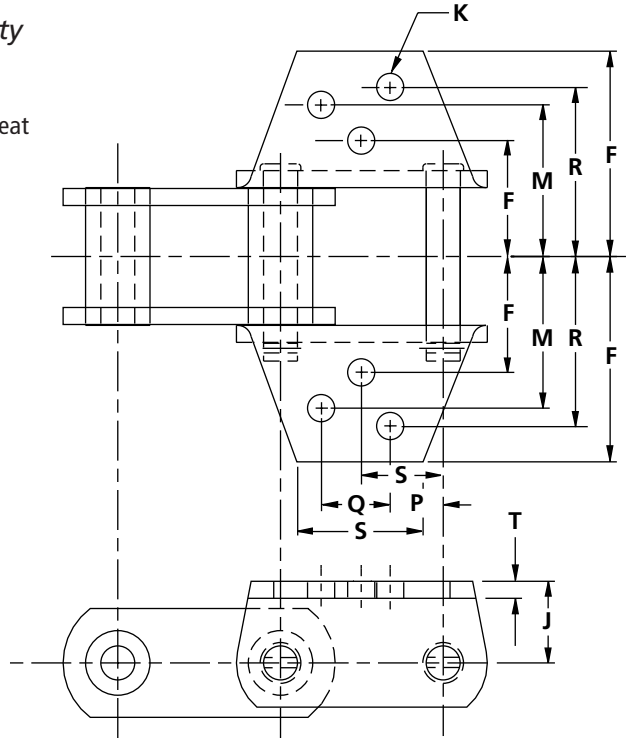
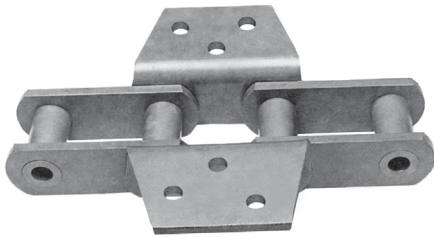
Steel Bushed Chain

K-3 & K-35 Attachments

Promac steel bushed chain is designed to operate under gritty or abrasive conditions, such as bucket elevators.

Key qualities are:

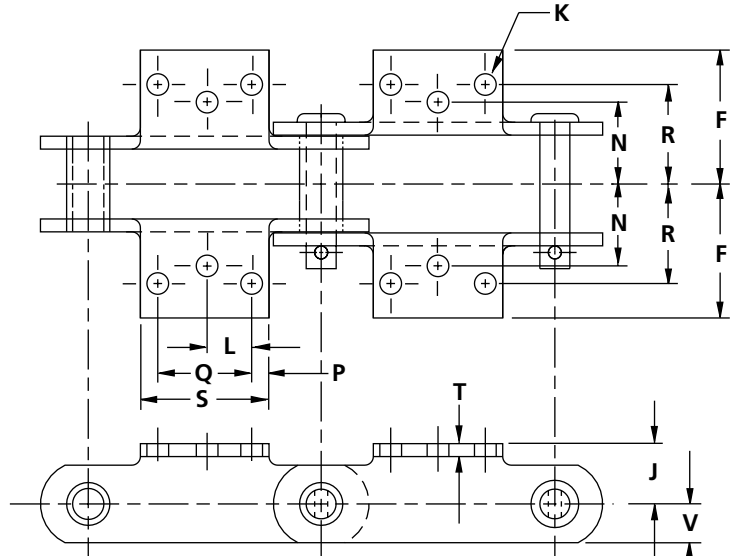
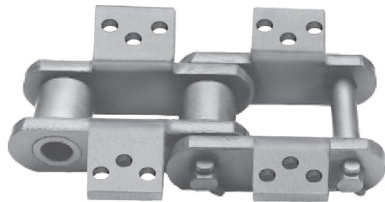
- High quality steel machined into a stud bushing that is case hardened and heat treated to extend the wear life.
- Pins are designed to the proper dimensions and heat treatment, for longer wear resistance and core toughness to resist impact.
- Assembled with high interference fit and consistent set down for greater fatigue strength and dimension integrity.



K-3 Attachment Specifications

All dimensions are inches unless otherwise indicated

Attachment Number	Chain Number	Dimensions											Approx. Weight (lbs./ft.)
		N	M	R	F	L	Q	S	P	Bolt Diameter K	J	T	
K-3	150X	3.75		5.75	6.53	3.02	2.75	4.25	1.66	.50	1.88	.50	26.9
K-3	856	3.28	5.47	6.03	6.75	3.00	2.75	4.25	1.63	.50	1.88	.50	27.5



K-35 Attachment Specifications

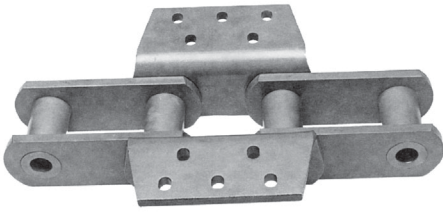
All dimensions are inches unless otherwise indicated

Attachment Number	Chain Number	Dimensions											Approx. Weight (lbs./ft.)
		N	R	F	L	Q	S	P	Bolt Diameter K	J	T	V	
K-35	856	3.63	5.88	6.75	1.25	2.50	6.44	1.75	.63	1.88	.50	1.25	27.5

Dimensions shown are nominal. Obtain certified prints for design and construction.

Steel Bushed Chain

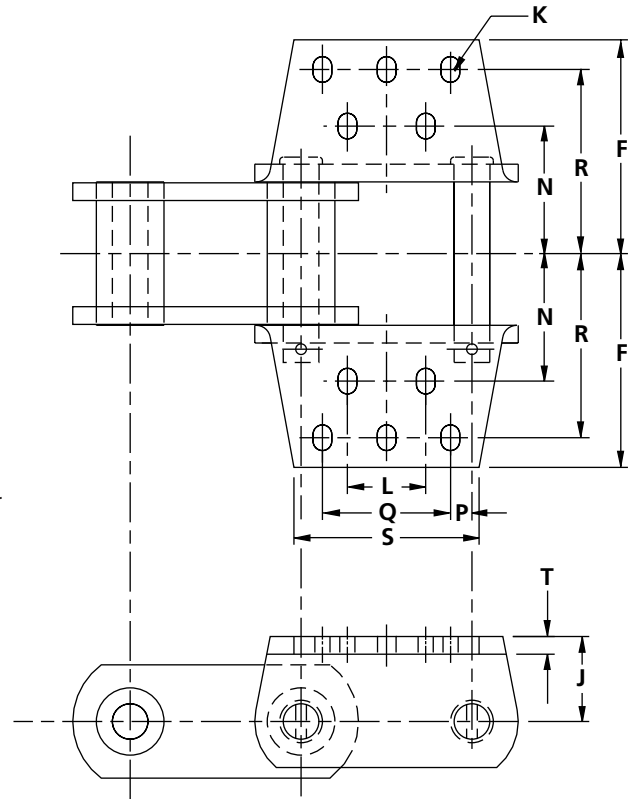
K-44 & K-443 Attachments



Promac steel bushed chain is designed to operate under gritty or abrasive conditions, such as bucket elevators.

Key qualities are:

- High quality steel machined into a stud bushing that is case hardened and heat treated to extend the wear life.
- Pins are designed to the proper dimensions and heat treatment, for longer wear resistance and core toughness to resist impact.
- Assembled with high interference fit and consistent set down for greater fatigue strength and dimension integrity.



K-44 Attachment Specifications

All dimensions are inches unless otherwise indicated

Attachment Number	Chain Number	Dimensions										Approx. Weight (lbs./ft.)
		N	R	F	L	Q	S	P	Bolt Diameter K	J	T	
K-44	857	3.50	6.00	7.25	3.50	3.50	6.56	1.25	.50	2.50	.50	42.0
K-44	859	4.50	6.50	7.55	2.75	4.50	6.50	.75	.63	3.00	.63	67.0

K-443 Attachment Specifications

Attachment Number	Chain Number	Dimensions										Approx. Weight (lbs./ft.)
		N	R	F	L	Q	S	P	Bolt Diameter K	J	T	
K-443	864	4.50	6.50	7.55	3.75	5.50	8.56	.75	.63	3.00	.63	53.0

Dimensions shown are nominal. Obtain certified prints for design and construction.