

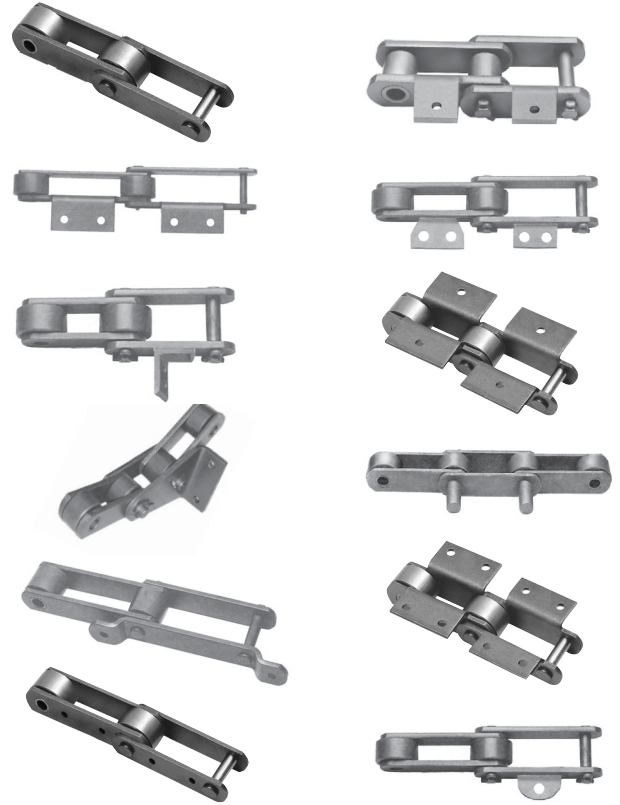
Roller Conveyor Chain

Promac roller conveyor chain has high strength and long wear, for heavy duty operation under severe conditions.

Promac chain parts are manufactured from carefully selected raw material, machined and heat treated employing precise and exacting specifications; the parts are assembled with modern equipment for precision for maximum performance and service.

Key qualities are:

- High quality material and heat treated which means reliable performance in your operation.
- Manufacturing methods with today's best equipment and tooling to guarantee long lasting life.
- Assembled with high interference fit and consistent set down for greater fatigue strength and dimension integrity.



Roller Conveyor Chain Interchange

Promac #	Rex #	Jeffrey #	US Tsubaki #	Allied Locke #
378-RX	RR-432	1862-C	378-RX	
81-X	81-X	81-X	81-X	81-X
53-R	SR-183	1583-C	53-R	MRS-3013
87-R	RR-585	IS-982	87-R	
93-R			93-R	
119-RX	1539		119-RX	MRS-1539
95-R	RR-1120	1520-C	95-R	MRS-4013
94-R	4	SS-4	94-R	MRS-4019
97-R	RS-4019		97-R	MRS-4119
US-90-R	SR-194	1594	US-90-R	MRS-4216
83-R			83-R	
91-R	2188		91-R	MRS-2188
89-R	531	149	89-R	MRS-4328
84-R			84-R	MRS-149
1113-R	SR-1113	1297	1113-R	
US-196-R	SR-196	1796	US-196-R	MRS-6018
604-R	2126	1829	604-R	MRS-1116
607-R	2190	IS-6022	607-R	
603-R	1606		603-R	
625-R	RS-658	1258	625-R	
627-R	SR-114		627-R	MRS-1114
629-R	S-951	951	629-R	
626-R	S-951		626-R	
614-R	6	1706	614-R	

Promac #	Rex #	Jeffrey #	US Tsubaki #	Allied Locke #
2184-RX	A-2184	2184-P	2184-RX	MRS-2184P
CC-5	1617		CC-5	MRS-1617
610-R			610-R	
96-R	2124	1007-D	96-R	MRS-996
1131-R	S-1131	1734	1131-R	
96-RX	A-2124	1007-DP	96-RX	
2198-RX	A-2198	2198-A	2198-RX	MRS-2198
2178-RX	A-2178	2178-A	2178-RX	
800-RX	A-2800	2800-PB	800-RX	
806-R			806-R	
896-R			896-R	
925-R			925-R	
B-912-R	E-911	IS-911	B-912-R	
D-963-R	E-922	1751	D-963-R	
4004	RS-4852		4004	
B-964-R	SS-933	933	B-964-R	
4009	RS-4851		4009	
4065	RS-4065		4065	
B-1263-R	SS-1227	1222	B-1263-R	
D-1263-R	E-1222	1322	D-1263-R	
E-1263-R	SS-1233		E-1263-R	
1273-R	ER-1244	1244	1273-R	
B-1264-R	FR-1233	1233	B-1264-R	
1265-R	4011		1265-R	

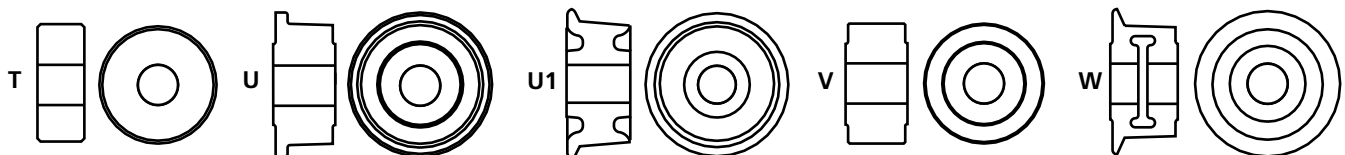
Roller Conveyor Plain Chain

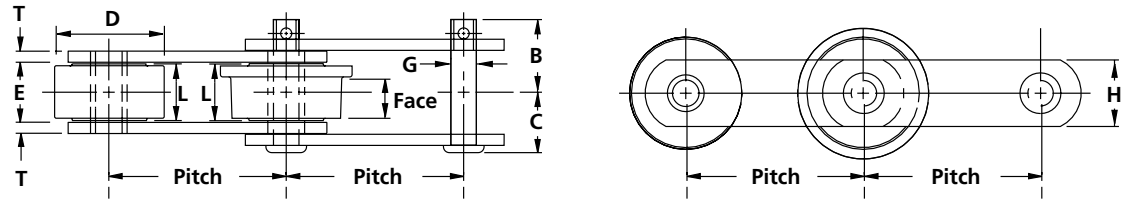


Promac roller conveyor chain is designed with pins, bushings, rollers and sidebars to consistently perform in all your conveying needs.

Key qualities are:

- High quality material and heat treated which means reliable performance in your operation.
- Manufacturing methods with today's best equipment and tooling to guarantee long lasting life.
- Assembled with high interference fit and consistent set down for greater fatigue strength and dimension integrity.





Plain Roller Conveyor Chain Specifications

All dimensions are inches unless otherwise indicated

Chain No.	Pitch	Width			Roller					Pin		Sidebar		Bushing	Bearng Area (in²)	Avg. Uft. Stgth. (lbs.)	Max. Work Load (lbs.)	Approx. Wgt. (lbs./ft.)	
		Pin End to CL	Pin Head to CL	Inside	Dia.	Lgth.	Sty.	Matl. ¹	Face Width	Dia	Matl. ¹	Hgt.	Th.	Matl. ¹					Matl. ¹
		B	C	E	D	L			G		H	T							
378RX	1.654	1.25	1.03	1.00	.88	.97	T	CCH		.44	ACH	1.13	.19	CHT	CCH	.60	20,000	2,100	3.7
81X	2.609	1.16	.91	1.06	.91	1.00	T	CCH		.44	CCH	1.13	.16	CHT	CCH	.61	15,000	2,150	2.5
87R	2.609	1.45	1.27	1.13	.88	1.06	T	AHT		.44	ACH	1.13	.25	HC	CCH	.72	18,000	2,500	3.8
53R	3.000	1.25	1.03	1.00	1.50	.97	T	CCH		.44	CHT	1.13	.19	CRS	ACH	.61	13,000	2,100	3.9
93R	3.000	1.47	1.28	1.25	1.50	1.19	T	CCH		.50	CHT	1.25	.25	HC	CCH	.88	20,000	3,000	4.8
119RX	3.075	1.84	1.59	1.50	1.25	1.44	T	CHT		.63	CHT	1.50	.31	CHT	CCH	1.34	48,000	4,600	6.8
95R	4.000	1.25	1.03	1.00	1.50	.97	T	CCH		.44	CHT	1.13	.19	CRS	ACH	.61	13,000	2,100	3.4
94R	4.000	1.30	1.11	.88	1.50	.81	T	CCH		.50	CHT	1.25	.25	CRS	CCH	.69	19,000	2,400	4.1
97R	4.000	1.30	1.11	.88	1.75	.81	T	CCH		.50	CHT	1.25	.25	CRS	CCH	.69	19,000	2,400	4.5
US-90R	4.000	1.33	1.11	1.19	2.00	1.13	T	CCH		.44	CHT	1.25	.19	HC	CCH	.69	16,500	2,400	5.3
91R	4.000	1.75	1.50	1.31	1.75	1.25	T	CRS		.63	CHT	1.50	.31	HC	CCH	1.22	28,000	4,100	7.0
89R	4.000	1.88	1.59	1.31	2.25	1.25	T	CCH		.63	ACH	1.50	.38	HC	CCH	1.30	28,000	4,500	10.6
84R	4.000	2.44	2.16	2.31	2.25	2.25	T	CCH		.63	CHT	1.50	.38	HC	CCH	1.93	28,000	4,700	13.5
1113R	4.040	1.75	1.50	1.31	2.00	1.25	T	CCH		.63	CHT	1.50	.31	HC	CCH	1.22	26,000	4,250	7.4
US-196R	6.000	1.45	1.20	1.13	2.00	1.06	T	CCH		.44	CHT	1.25	.25	HC	CCH	.72	18,000	2,500	5.0
604R	6.000	1.58	1.33	1.31	2.00	1.25	T	CCH		.56	CHT	1.50	.25	HC	CCH	1.01	21,000	3,500	5.4
607R	6.000	1.58	1.33	1.31	2.50	1.25	T	CCH		.56	CHT	1.50	.25	HC	CCH	1.01	21,000	3,500	6.5
603R	6.000	1.58	1.33	1.31	2.50	1.25	U	AIHT	.88	.56	CHT	1.50	.25	HC	CCH	1.01	21,000	3,500	5.5
625R	6.000	1.81	1.56	1.69	3.00	1.63	U	AIHT	1.13	.63	CHT	2.00	.25	HC	CCH	1.38	25,000	4,750	9.8
627R	6.000	1.75	1.47	1.31	2.00	1.25	T	CCH		.63	CHT	1.50	.31	HC	CCH	1.22	26,000	4,250	6.6
629R	6.000	1.84	1.59	1.50	3.00	1.44	V	CCH	1.31	.63	CHT	1.50	.31	HC	CCH	1.34	26,000	4,650	9.7
626R	6.000	1.81	1.66	1.31	3.00	1.25	V	CCH	1.31	.63	CHT	2.00	.38	HC	CCH	1.30	28,000	4,500	10.7
614R	6.000	2.03	1.78	1.38	2.50	1.31	T	CCH		.75	CHT	2.00	.38	HC	CCH	1.61	38,000	5,600	11.0
2184RX ²	6.000	2.03	1.72	1.38	3.00	1.31	V	CCH	1.18	.88	ACH	2.00	.38	CHT	ACH	1.88	75,000	6,500	12.0
CC ³	6.000	1.69	1.63	1.38	2.50	1.31	T	CCH		.69	CCH	2.50	.31	HC	CCH	1.38	50,000	4,800	11.0
610R	6.000	2.19	1.94	1.69	2.75	1.63	T	CCH		.88	CHT	2.25	.38	HC	CCH	2.16	45,000	7,450	13.5
96R	6.000	2.09	1.84	1.50	2.75	1.44	V	CCH	1.31	.75	CHT	2.00	.38	HC	CCH	1.70	47,000	5,900	11.8
1131R	6.000	2.09	1.84	1.50	3.00	1.44	T	CCH		.75	CHT	2.00	.38	HC	CCH	1.70	47,000	5,900	12.5
96RX	6.000	2.09	1.84	1.50	2.75	1.44	V	CCH	1.31	.75	CHT	2.00	.38	CHT	CCH	1.70	70,000	5,900	11.8
2198RX	6.000	2.16	1.91	1.50	2.75	1.44	V	CCH	1.31	.88	AHT	2.25	.50	CHT	CCH	2.20	100,000	7,700	15.3
2178RX	6.000	2.09	1.84	1.50	2.75	1.44	V	CCH	1.31	.88	CCH	2.25	.38	CHT	CCH	2.00	85,000	6,900	13.1
800RX	8.000	2.63	2.31	1.81	3.50	1.75	V	CCH	1.63	1.00	ACH	3.00	.50	CHT	CCH	2.81	125,000	9,800	22.5
806R	8.000	2.63	2.22	1.81	3.00	1.75	T	CCH		1.00	AHT	2.50	.50	CHT	CCH	2.81	95,000	9,800	22.5
896R	8.000	2.09	1.78	1.50	3.50	1.44	V	CCH	1.31	.75	ACH	2.00	.38	HC	CCH	1.70	47,000	5,900	14.3
925R	9.000	1.84	1.56	1.69	3.00	1.63	U	AIHT	1.13	.63	CHT	2.00	.25	HC	CCH	1.38	25,000	4,150	8.2
B-912R	9.000	1.88	1.59	1.50	3.00	1.44	V	CCH	1.38	.63	ACH	2.00	.31	HC	CCH	1.34	47,000	4,650	8.6
B-963R	9.000	2.34	2.06	2.00	3.50	1.94	U	AIHT	1.25	.75	CHT	2.00	.38	HC	CCH	2.07	41,000	7,200	13.0
D-963R	9.000	2.34	2.06	2.00	3.50	1.94	V	CCH	1.81	.75	CHT	2.00	.38	HC	CCH	2.07	41,000	7,200	13.0
4004	9.000	3.03	2.63	2.63	3.00	2.56	T	CHT		1.00	CHT	2.50	.50	HC	CCH	3.63	75,000	12,700	18.0
B964R	9.000	2.47	2.19	2.25	4.00	2.19	W	AIHT	1.50	.88	CHT	2.50	.38	HC	CCH	2.65	70,000	9,200	17.0
4009	9.000	2.50	2.13	2.19	3.00	2.13	T	CCH		.88	AIH	2.50	.38	CHT	ACH	2.60	67,000	9,200	13.0
4065	9.000	3.38	3.13	3.06	4.25	3.00	V	CCH	1.25	1.25	AIH	3.50	.63	HC	CCH	5.40	148,000	18,900	35.7
B-1263R	12.000	2.34	2.06	2.00	3.50	1.94	U	AIHT	1.25	.75	CHT	2.00	.38	HC	CCH	2.07	41,000	7,200	11.0
D-1263R	12.000	2.34	2.06	2.00	3.50	1.94	V	CCH	1.81	.75	CHT	2.00	.38	HC	CCH	2.07	41,000	7,200	11.0
E-1263R	12.000	2.34	2.06	2.00	4.00	1.94	W	AIHT	1.25	.75	CHT	2.00	.38	HC	CCH	2.07	41,000	7,200	12.0
1273R	12.000	3.06	2.66	2.63	5.00	2.56	U1	AIHT	1.75	1.00	CHT	2.50	.50	HC	CCH	3.63	75,000	12,700	21.5
B-1264R	12.000	2.47	2.19	2.25	4.00	2.19	W	AIHT	1.50	.88	CHT	2.50	.38	HC	CCH	2.65	70,000	9,200	15.0
1265R	12.000	2.47	2.19	2.25	3.00	2.19	V	CCH	2.06	.88	ACH	2.50	.38	HC	CCH	2.65	70,000	10,000	12.7

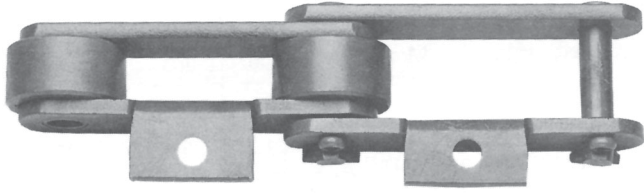
1) Material: CHT = Carbon heat treated; CCH = Carbon case hardened; AHT = Alloy heat treated; CRS = Cold rolled steel; AIHT = Alloy iron heat treated; ACH = Alloy case hardened; HC = High carbon.

2) Offset sidebar

Dimensions shown are nominal. Obtain certified prints for design and construction.

Roller Conveyor Chain

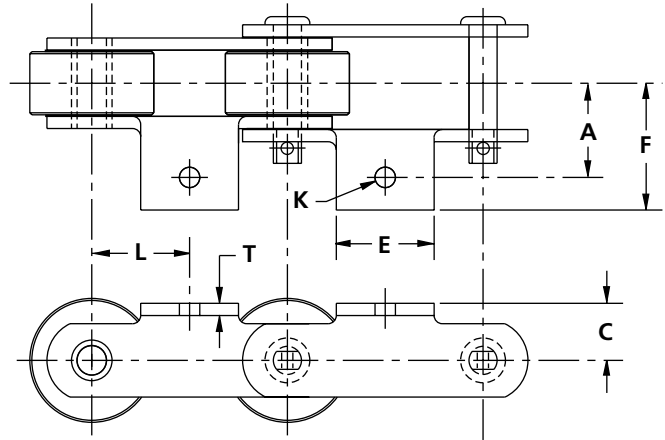
A-1 Attachments



Promac roller conveyor chain is designed with pins, bushings, rollers and sidebars to consistently perform in all your conveying needs.

Key qualities are:

- High quality material and heat treated which means reliable performance in your operation.
- Manufacturing methods with today's best equipment and tooling to guarantee long lasting life.
- Assembled with high interference fit and consistent set down for greater fatigue strength and dimension integrity.



A-1 Attachment Specifications

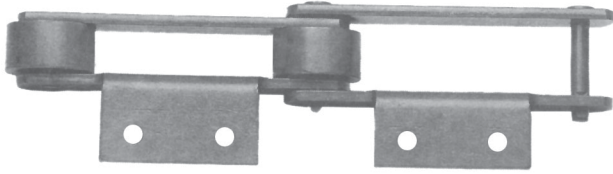
All dimensions are inches unless otherwise indicated

Attachment Number	Chain Number	Dimensions							Approx. Wgt. (lbs./ft.)
		A	C	E	F	Bolt Diameter K	L	T	
A-1	53R	1.47	.81	2.00	2.09	.31	1.50	.19	4.4
A-1	84R	2.66	1.25	2.00	3.41	.63	2.00	.38	18.0
A-1	89R	2.00	1.25	1.75	2.81	.38	2.00	.38	11.0
A-1	US-90R	2.00	1.13	3.00	2.63	.38	2.00	.19	6.3
A-1	91R	1.81	1.06	2.88	2.38	.50	1.34	.31	7.9
A-1	93R	1.88	1.00	1.63	2.42	.50	2.00	.25	5.5
A-1	94R	1.38	.88	2.50	1.88	.38	2.00	.25	4.7
A-1	95R	1.38	.81	2.63	2.16	.38	1.54	.19	3.9
A-1	US-196R	2.00	1.25	3.50	2.63	.38	1.30	.25	6.6
A-1	603R	2.00	1.13	3.50	2.70	.38	3.00	.25	8.8
A-1	604R	2.00	1.13	3.50	2.70	.38	3.00	.25	6.3
A-1	607R	2.00	1.13	3.50	2.70	.38	3.00	.25	7.4
A-1	610R	2.56	1.50	4.00	3.33	.63	3.00	.38	15.4
A-1	614R	2.13	1.63	2.50	3.08	.50	2.00	.38	13.0

Note: Some A-1 attachments are supplied with three holes. Use center hole.
Dimensions shown are nominal. Obtain certified prints for design and construction.

Roller Conveyor Chain

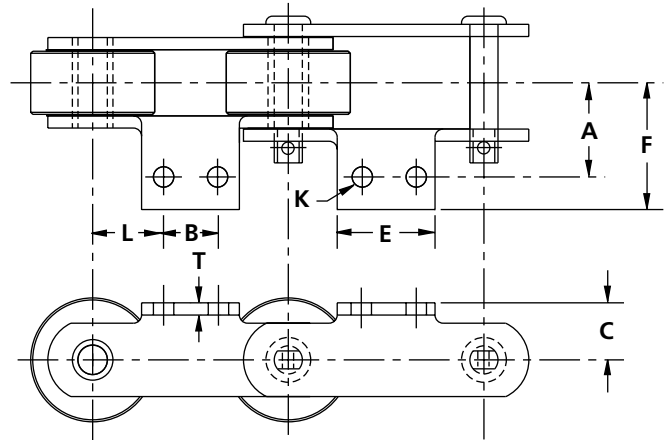
A-2 Attachments



Promac roller conveyor chain is designed with pins, bushings, rollers and sidebars to consistently perform in all your conveying needs.

Key qualities are:

- High quality material and heat treated which means reliable performance in your operation.
- Manufacturing methods with today's best equipment and tooling to guarantee long lasting life.
- Assembled with high interference fit and consistent set down for greater fatigue strength and dimension integrity.



A-2 Attachment Specifications

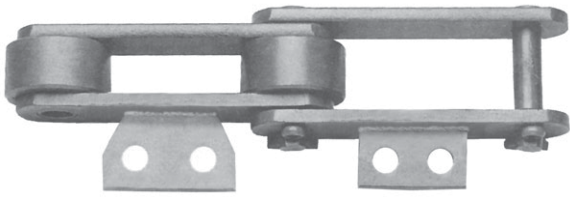
All dimensions are inches unless otherwise indicated

Attachment Number	Chain Number	Dimensions								Approx. Wgt. (lbs./ft.)
		A	B	C	E	F	Bolt Diameter K	L	T	
A-2	53R	1.47	1.06	.81	2.00	1.97	.25	.97	.19	4.4
A-2	84R	2.66	1.75	1.25	2.88	3.41	.38	1.13	.38	18.0
A-2	87R	2.13	1.25	.81	2.13	2.63	.31	.68	.25	4.8
A-2	US-90R	2.00	2.00	1.13	3.13	2.63	.38	1.00	.19	6.3
A-2	91R	1.81	1.75	1.06	2.88	2.38	.50	1.13	.31	7.9
A-2	93R	1.88	1.25	1.00	2.00	2.42	.38	.88	.25	5.5
A-2	94R	1.38	1.50	.88	2.50	1.88	.38	1.25	.25	4.7
A-2	95R	1.38	1.19	.81	2.63	2.16	.31	1.41	.19	3.9
A-2	119R	2.00	1.87	1.25	2.88	2.56	.31	.59	.31	7.9
A-2	US-196R	2.00	2.00	1.25	3.50	2.63	.38	2.00	.25	6.6
A-2	603R	2.00	2.00	1.13	3.50	2.72	.38	2.00	.25	8.9
A-2	604R	2.00	2.00	1.13	3.50	2.72	.38	2.00	.25	6.0
A-2	607R	2.00	2.00	1.13	3.50	2.72	.38	2.00	.25	6.9
A-2	614R	2.13	2.63	1.63	5.50	2.92	.50	1.69	.38	13.0
A-2	625R	2.19	2.00	1.63	4.63	2.91	.38	2.00	.25	12.5
A-2	626R	2.19	2.00	1.63	3.50	3.05	.38	2.00	.38	12.7
A-2	627R	2.00	2.00	1.13	3.50	2.80	.50	2.00	.31	8.5
A-2	629R	2.00	2.50	2.00	3.50	3.00	.38	1.75	.31	11.7
A-2	B-912R	2.56	3.50	1.63	5.50	3.91	.50	2.75	.25	11.1
A-2	925R	2.50	3.50	1.75	5.50	3.38	.50	2.75	.25	10.7
A-2	B-963R	2.88	3.50	2.50	5.50	4.28	.50	2.75	.25	14.6
A-2	D-963R	2.88	3.50	2.50	5.50	4.28	.50	2.75	.25	13.9
A-2	B-964R	3.00	3.50	2.88	5.50	4.41	.50	2.75	.31	19.4
A-2	1113R	2.06	1.50	1.25	2.88	2.77	.38	1.27	.31	9.3
A-2	1131R	3.00	2.63	1.63	5.50	3.75	.50	1.69	.38	15.5
A-2	B-1263R	2.88	6.00	2.50	8.00	4.28	.50	3.00	.25	12.9
A-2	D-1263R	2.88	6.00	2.50	8.00	4.28	.50	3.00	.25	13.1
A-2	B-1264R	3.00	6.00	2.88	8.00	4.41	.50	3.00	.31	17.1
A-2	1273R	3.75	6.00	3.63	8.00	5.34	.50	3.00	.38	25.8
A-2	1276R	3.03	6.00	2.75	8.00	4.13	.50	3.00	.25	16.9

Note: Some A-2 attachments are supplied with three holes. Use the two outside holes.
Dimensions shown are nominal. Obtain certified prints for design and construction.

Roller Conveyor Chain

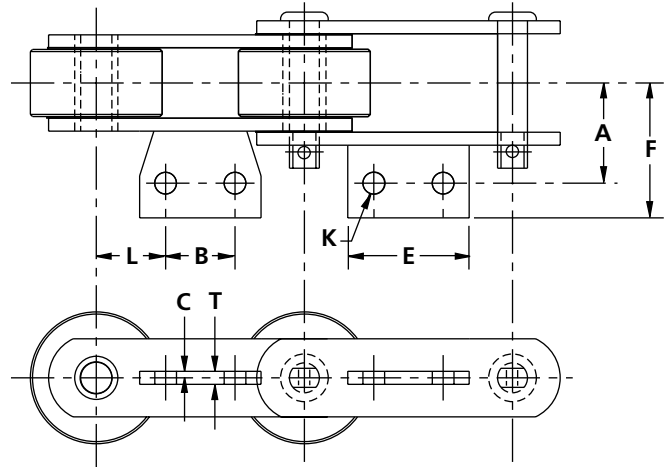
A-11 & A-63 Attachments



Promac roller conveyor chain is designed with pins, bushings, rollers and sidebars to consistently perform in all your conveying needs.

Key qualities are:

- High quality material and heat treated which means reliable performance in your operation.
- Manufacturing methods with today's best equipment and tooling to guarantee long lasting life.
- Assembled with high interference fit and consistent set down for greater fatigue strength and dimension integrity.



A-11 Attachment Specifications

All dimensions are inches unless otherwise indicated

Attachment Number	Chain Number	Dimensions								Approx. Wgt. (lbs./ft.)
		A	B	C	E	F	Bolt Diameter K	L	T	
A-11	53R	1.58	1.06	.09	2.00	1.94	.25	1.31	.19	4.4
A-11	94R	1.75	1.38	.13	2.50	2.50	.50	1.88	.25	5.2
A-11	603R	2.56	2.25	.13	3.25	3.06	.38	1.88	.25	7.6
A-11	604R	2.56	2.25	.13	3.25	3.06	.38	1.88	.25	7.6
A-11	607R	2.56	2.25	.13	3.25	3.06	.38	1.56	.25	7.6
A-11	614R	2.75	2.88	.19	4.5	3.56	.50	1.88	.38	12.5
A-11	626R	2.19	2.25	.13	3.25	2.88	.38	1.19	.25	12.0

A-63 Attachment Specifications

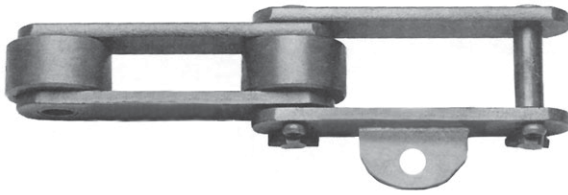
All dimensions are inches unless otherwise indicated

Attachment Number	Chain Number	Dimensions								Approx. Wgt. (lbs./ft.)
		A	B	C	E	F	Bolt Diameter K	L	T	
A-63	53R	1.63	.63	.09	1.50	2.09	.25	2.00	.19	4.4

Dimensions shown are nominal. Obtain certified prints for design and construction.

Roller Conveyor Chain

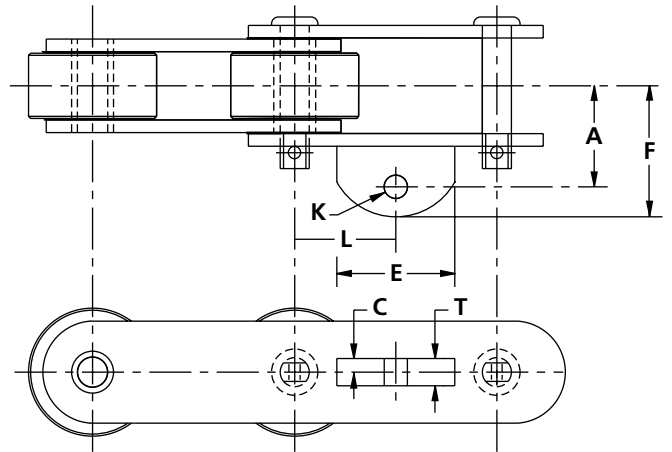
A-22 & A-42 Attachments



Promac roller conveyor chain is designed with pins, bushings, rollers and sidebars to consistently perform in all your conveying needs.

Key qualities are:

- High quality material and heat treated which means reliable performance in your operation.
- Manufacturing methods with today's best equipment and tooling to guarantee long lasting life.
- Assembled with high interference fit and consistent set down for greater fatigue strength and dimension integrity.



A-22 Attachment Specifications

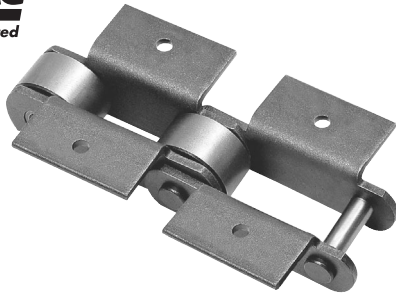
All dimensions are inches unless otherwise indicated

Attachment Number	Chain Number	Dimensions							Approx. Wgt. (lbs./ft.)
		A	C	E	F	Bolt Diameter K	L	T	
A-22	94R	1.84	.19	1.25	2.44	.38	3.00	.38	4.5
A-22	614R	2.25	.25	2.00	3.06	.50	3.00	.38	11.9

A-42 Attachment Specifications

Attachment Number	Chain Number	Dimensions							Approx. Wgt. (lbs./ft.)
		A	C	E	F	Bolt Diameter K	L	T	
A-42	53R	1.56	.13	1.00	2.00	.38	2.00	.25	4.2
A-42	86R	2.34	.19	2.00	3.16	.50	1.50	.38	6.4
A-42	95R	1.63	.19	1.25	2.13	.38	3.00	.38	3.6
A-42	119R	2.00	.25	1.38	2.69	.63	1.50	.50	7.5
A-42	604R	2.34	.25	2.00	3.16	.63	3.00	.50	6.2
A-42	614R	2.75	.25	2.00	3.75	.63	3.00	.50	12.3
A-42	1131R	2.84	.25	2.00	3.84	.63	3.00	.50	13.8
A-42	2184RX	2.63	.25	2.00	3.63	.63	3.00	.50	13.6

Dimensions shown are nominal. Obtain certified prints for design and construction.



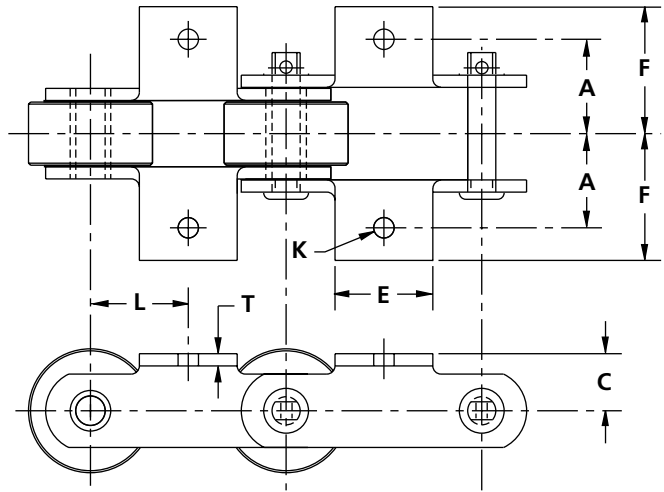
Roller Conveyor Chain

K-1 Attachments

Promac roller conveyor chain is designed with pins, bushings, rollers and sidebars to consistently perform in all your conveying needs.

Key qualities are:

- High quality material and heat treated which means reliable performance in your operation.
- Manufacturing methods with today's best equipment and tooling to guarantee long lasting life.
- Assembled with high interference fit and consistent set down for greater fatigue strength and dimension integrity.



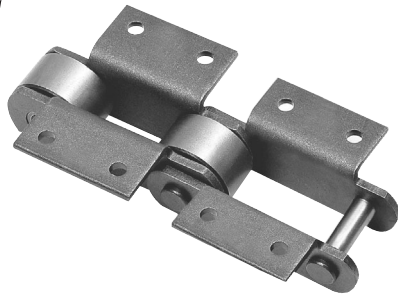
K-1 Attachment Specifications

All dimensions are inches unless otherwise indicated

Attachment Number	Chain Number	Dimensions							Approx. Wgt. (lbs./ft.)
		A	C	E	F	Bolt Diameter K	L	T	
K-1	53R	1.47	.81	2.00	2.09	.31	1.50	.19	4.9
K-1	84R	2.66	1.25	2.00	3.66	.63	2.00	.38	20.7
K-1	89R	2.00	1.25	2.00	2.84	.38	2.00	.38	13.0
K-1	US-90R	2.00	1.13	3.13	2.63	.38	2.00	.19	7.3
K-1	91R	1.81	1.06	2.88	2.38	.50	2.00	.31	8.8
K-1	93R	1.88	1.00	1.63	2.42	.50	1.34	.25	6.0
K-1	94R	1.38	.88	2.50	1.88	.38	2.00	.25	5.3
K-1	95R	1.38	.81	2.63	2.16	.38	2.00	.19	4.4
K-1	119R	2.09	1.25	2.88	2.59	.50	1.54	.31	9.0
K-1	US-196R	2.00	1.25	3.50	2.63	.38	3.00	.25	7.5
K-1	603R	2.00	1.13	3.50	2.70	.38	3.00	.25	9.7
K-1	604R	2.00	1.13	3.50	2.70	.38	3.00	.25	7.2
K-1	607R	2.00	1.13	3.50	2.70	.63	3.00	.25	8.3
K-1	610R	2.56	1.50	4.00	3.33	.50	3.00	.38	17.3
K-1	614R	2.13	1.63	2.50	3.08	.38	3.00	.38	15.0

Note: Some K-1 attachments are supplied with three holes. Use center hole.

Dimensions shown are nominal. Obtain certified prints for design and construction.



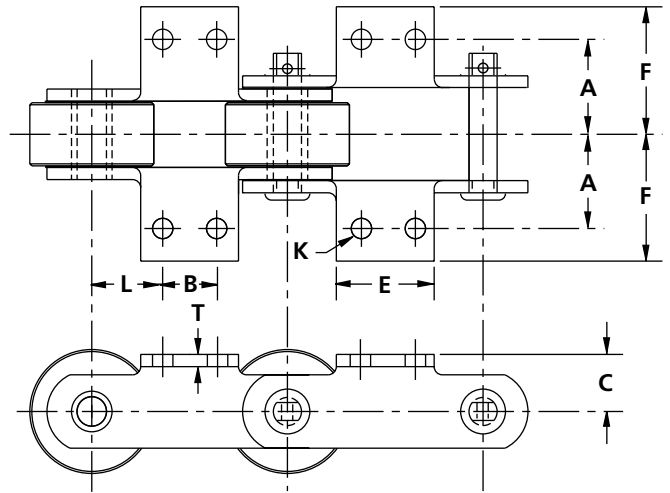
Roller Conveyor Chain

K-2 Attachments

Promac roller conveyor chain is designed with pins, bushings, rollers and sidebars to consistently perform in all your conveying needs.

Key qualities are:

- High quality material and heat treated which means reliable performance in your operation.
- Manufacturing methods with today's best equipment and tooling to guarantee long lasting life.
- Assembled with high interference fit and consistent set down for greater fatigue strength and dimension integrity.



K-2 Attachment Specifications

All dimensions are inches unless otherwise indicated

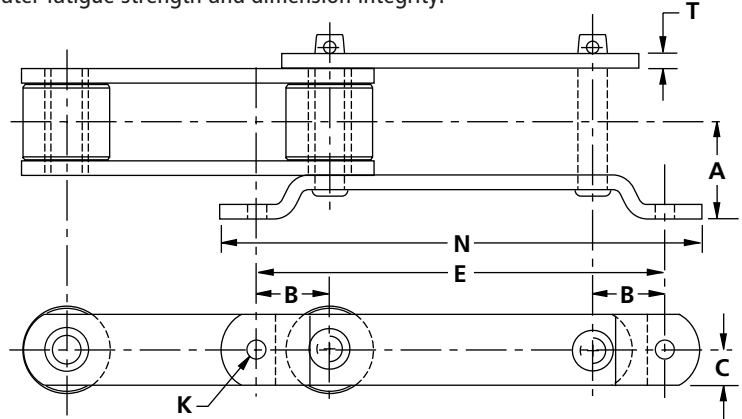
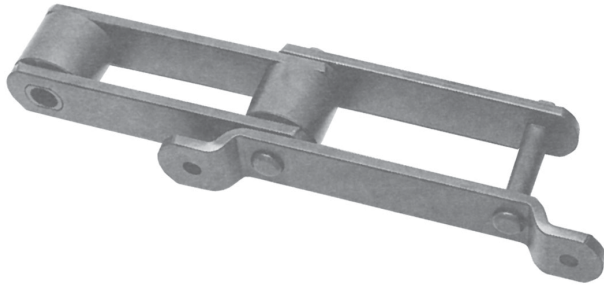
Attachment Number	Chain Number	Dimensions								Approx. Wgt. (lbs./ft.)
		A	B	C	E	F	Bolt Diameter K	L	T	
K-2	53R	1.47	1.06	.81	2.00	2.16	.25	.97	.19	4.9
K-2	84R	2.66	1.75	1.25	2.88	3.41	.38	1.13	.38	20.7
K-2	87R	2.13	1.25	.81	2.13	2.63	.31	.68	.25	5.8
K-2	US-90R	2.00	2.00	1.13	3.25	2.63	.38	1.00	.19	7.3
K-2	91R	1.81	1.75	1.06	2.88	2.47	.50	1.13	.31	8.8
K-2	93R	1.88	1.25	1.00	2.00	2.69	.38	.88	.25	6.0
K-2	94R	1.38	1.50	.88	2.50	2.09	.38	1.25	.25	5.3
K-2	95R	1.38	1.19	.81	2.63	2.16	.31	1.41	.19	4.4
K-2	96R	2.19	3.00	1.63	5.50	3.00	.50	1.50	.38	15.8
K-2	96RX	2.19	3.00	1.63	5.50	3.00	.50	1.50	.38	15.8
K-2	119R	2.00	1.87	1.25	2.88	2.56	.31	.59	.31	9.0
K-2	US-196R	2.00	2.00	1.25	3.50	2.63	.38	2.00	.25	7.5
K-2	603R	2.00	2.00	1.13	3.50	2.72	.38	2.00	.25	9.1
K-2	604R	2.00	2.00	1.13	3.50	2.72	.38	2.00	.25	7.0
K-2	607R	2.00	2.00	1.50	3.50	2.72	.38	2.00	.25	7.4
K-2	614R	2.13	2.63	1.63	5.50	2.92	.50	1.69	.38	15.0
K-2	625R	2.19	2.00	2.13	4.63	2.91	.38	2.00	.25	13.9
K-2	626R	2.19	2.00	1.63	3.50	3.05	.38	2.00	.38	14.7
K-2	627R	2.00	2.00	1.13	3.50	2.80	.38	2.00	.31	10.7
K-2	629R	2.00	2.50	2.00	3.50	3.00	.38	1.75	.31	13.7
K-2	800RX	2.59	4.50	2.19	7.00	3.55	.63	1.75	.50	26.1
K-2	806R	2.59	3.50	2.19	6.88	3.80	.63	2.25	.50	22.5
K-2	B-912R	2.56	3.50	1.63	5.50	3.91	.50	2.75	.25	13.1
K-2	925R	2.50	3.50	1.75	5.50	3.38	.50	2.75	.25	13.2
K-2	B-963R	2.88	3.50	2.50	5.50	4.28	.50	2.75	.25	16.6
K-2	D-963R	2.88	3.50	2.50	5.50	4.28	.50	2.75	.25	16.0
K-2	B-964R	3.00	3.50	2.88	5.50	4.81	.50	2.75	.31	22.3
K-2	1113R	2.06	1.50	1.25	2.88	2.77	.38	1.27	.31	11.0
K-2	1131R	3.00	2.63	1.63	5.50	3.75	.50	1.69	.38	18.4
K-2	B-1263R	2.88	6.00	2.50	8.00	4.28	.50	3.00	.25	15.2
K-2	D-1263R	2.88	6.00	2.50	8.00	4.28	.50	3.00	.25	15.4
K-2	E-1263R	2.88	6.00	2.50	8.00	4.28	.50	3.00	.25	16.6
K-2	B-1264R	3.00	6.00	2.88	8.00	4.41	.50	3.00	.31	20.3
K-2	1273R	3.75	6.00	3.63	8.00	5.34	.50	3.00	.38	30.4
K-2	2178RX	2.19	3.00	1.63	4.50	3.02	.50	1.50	.38	15.3
K-2	2198RX	2.19	3.00	1.63	4.50	3.31	.50	1.50	.50	18.2

Note: Some K-2 attachments are supplied with three holes. Use the two outside holes. Dimensions shown are nominal. Obtain certified prints for design and construction.

Promac roller conveyor chain is designed with pins, bushings, rollers and sidebars to consistently perform in all your conveying needs.

Key qualities are:

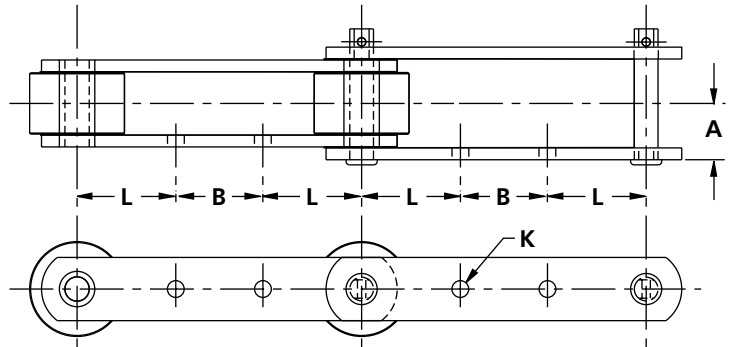
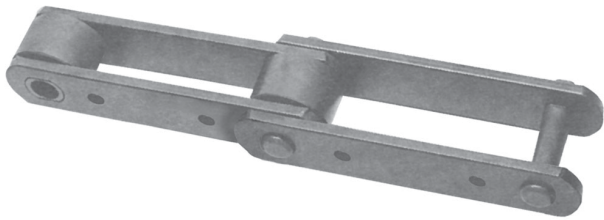
- High quality material and heat treated which means reliable performance in your operation.
- Manufacturing methods with today's best equipment and tooling to guarantee long lasting life.
- Assembled with high interference fit and consistent set down for greater fatigue strength and dimension integrity.



All dimensions are inches unless otherwise indicated

G-5 Attachment Specifications

Attachment Number	Chain Number	Dimensions							Approx. Wgt. (lbs./ft.)
		A	B	C	E	Bolt Diameter K	N	T	
G-5	4004	3.34	2.50	1.25	14.00	.63	16.50	.50	18.5
G-5	4009	3.03	2.50	1.25	14.00	.63	16.50	.38	14.7
G-5	4065	3.94	2.50	1.75	14.00	.63	16.50	.63	38.6



All dimensions are inches unless otherwise indicated

G-6 Attachment Specifications

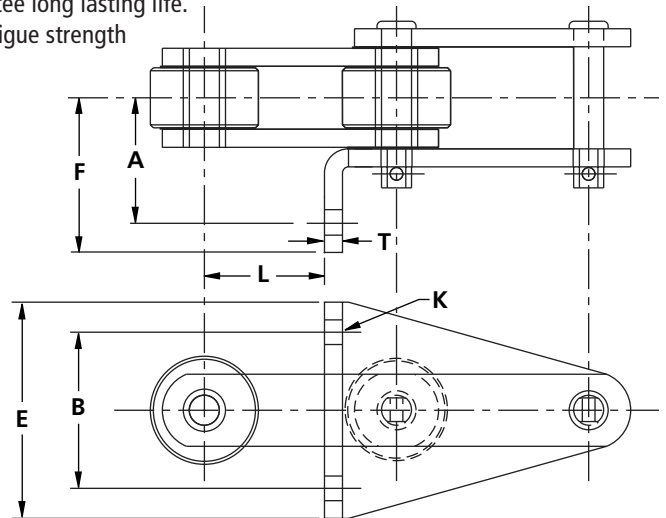
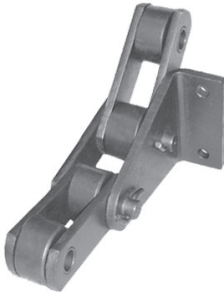
Attachment Number	Chain Number	Dimensions				Approx. Wgt. (lbs./ft.)
		A	B	Bolt Diameter K	L	
G-6	809R	1.53	2.75	.50	3.13	14.2
G-6	B-912R	1.41	2.75	.50	3.13	10.0
G-6	925R	1.38	2.75	.50	3.13	8.5
G-6	B-963R	1.78	3.00	.50	3.00	13.9
G-6	D-963R	1.78	3.00	.50	3.00	13.2
G-6	B-964R	1.91	2.50	.50	3.25	18.1
G-6	B-1212R	1.41	3.75	.50	4.13	8.2
G-6	B-1263R	1.78	3.75	.50	4.13	11.6
G-6	C-1263R	1.78	3.75	.50	4.13	11.9
G-6	D-1263R	1.78	3.75	.50	4.13	11.8
G-6	B-1264R	1.91	3.75	.50	4.13	15.4
G-6	1273R	2.34	3.75	.63	4.13	23.2

Dimensions shown are nominal. Obtain certified prints for design and construction.

Promac roller conveyor chain is designed with pins, bushings, rollers and sidebars to consistently perform in all your conveying needs.

Key qualities are:

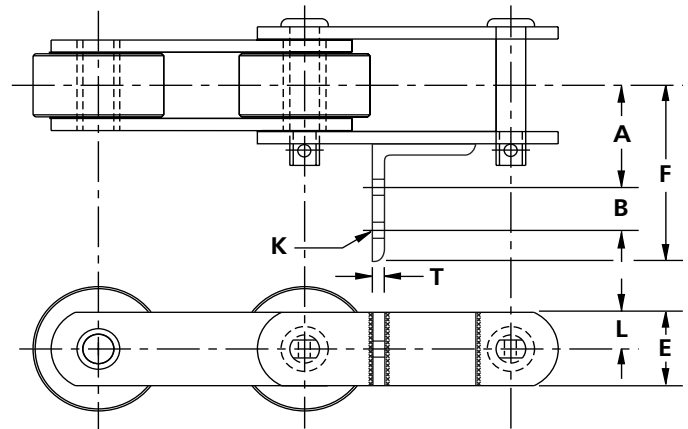
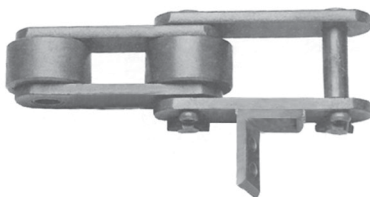
- High quality material and heat treated which means reliable performance in your operation.
- Manufacturing methods with today's best equipment and tooling to guarantee long lasting life.
- Assembled with high interference fit and consistent set down for greater fatigue strength and dimension integrity.



All dimensions are inches unless otherwise indicated

G-19 Attachment Specifications

Attachment Number	Chain Number	Dimensions							Approx. Wgt. (lbs./ft.)
		A	B	E	F	Bolt Diameter K	L	T	
G-19	89R	2.63	3.25	4.50	3.44	.50	2.50	.38	11.7
G-19	89RX	2.63	3.25	4.50	3.24	.50	2.50	.38	11.7
G-19	925R	2.56	3.50	5.50	3.36	.50	2.63	.25	9.8
G-19	B-1263R	2.78	3.50	5.50	3.78	.50	2.63	.25	13.9
G-19	C-1263R	2.78	3.50	5.50	3.78	.50	2.63	.25	14.2
G-19	D-1263R	2.78	3.50	5.50	3.78	.50	2.63	.25	13.4
G-19	B-1264R	2.91	3.50	5.50	3.91	.50	2.63	.31	18.2
G-19	1273R	3.34	5.00	7.50	4.34	.50	2.63	.38	27.6



All dimensions are inches unless otherwise indicated

G-29 Attachment Specifications

Attachment Number	Chain Number	Dimensions							Approx. Wgt. (lbs./ft.)
		A	B	E	F	Bolt Diameter K	L	T	
G-29	94R	1.84	1.13	1.25	3.47	.37	.63	.25	5.3
G-29	1131R	2.78	1.50	2.00	5.03	.44	1.00	.38	15.2

Dimensions shown are nominal. Obtain certified prints for design and construction.

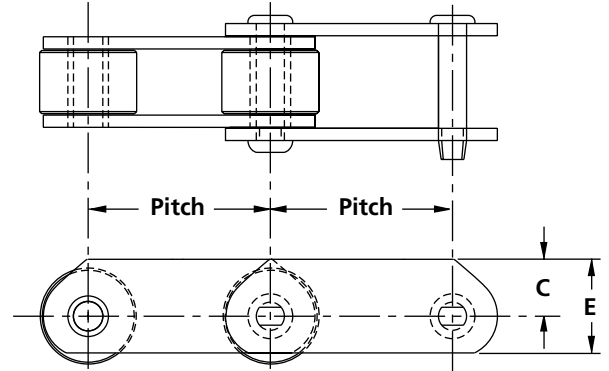
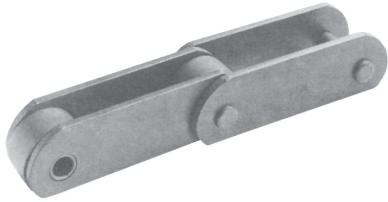
Roller Conveyor Chain

High Sidebar Chain & D-1, D-5 Attachments

Promac roller conveyor chain is designed with pins, bushings, rollers and sidebars to consistently perform in all your conveying needs.

Key qualities are:

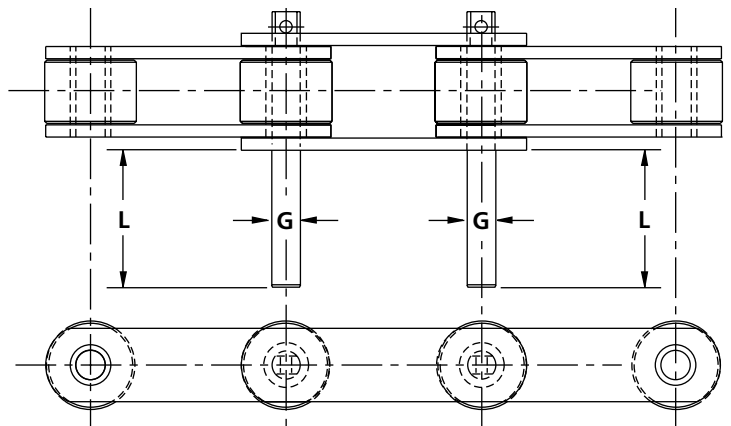
- High quality material and heat treated which means reliable performance in your operation.
- Manufacturing methods with today's best equipment and tooling to guarantee long lasting life.
- Assembled with high interference fit and consistent set down for greater fatigue strength and dimension integrity.



High Sidebar Chain Specifications

All dimensions are inches unless otherwise indicated

Attachment Number	Chain Number	Pitch	Dimensions		Approx. Wgt. (lbs./ft.)
			C	E	
High Sidebar Chain	53R	3.000	.94	1.50	5.0
High Sidebar Chain	94R	4.000	.88	1.50	4.8
High Sidebar Chain	95R	4.000	.94	1.50	4.1
High Sidebar Chain	US-90R	4.000	1.25	2.00	7.0
High Sidebar Chain	89R	4.000	1.25	2.00	11.9
High Sidebar Chain	84R	4.000	1.50	2.25	16.4
High Sidebar Chain	CC5	6.000	1.50	2.50	11.0



D-1, D-5 Attachment Specifications

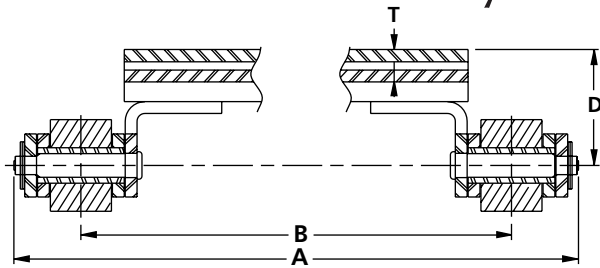
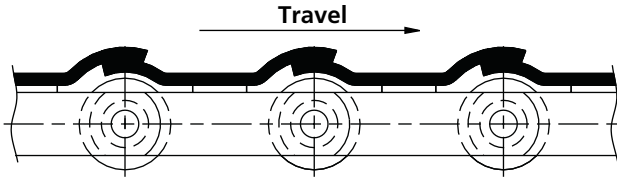
All dimensions are inches unless otherwise indicated

Chain Number	Dimensions		Approx. Wgt. (lbs./ft.)
	Diameter G	L	
53R	.75	2.00	4.9
94R	.75	2.00	4.8
US-196R	.75	3.00	5.8

Extended pin attachments of any length can be furnished on all chains listed provided "G" dimension is the same as or exceeds the chain pin diameter. Dimensions shown are nominal. Obtain certified prints for design and construction.

Roller Conveyor Chain

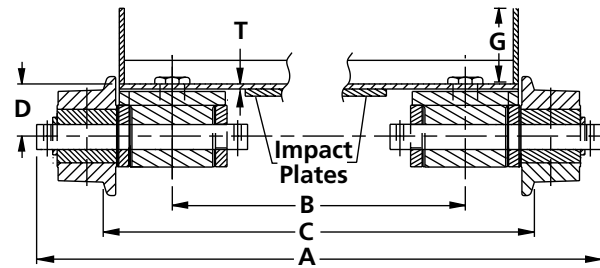
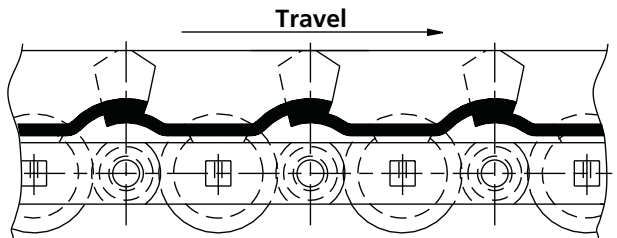
Aprons



Style A Aprons Specifications

All dimensions are inches unless otherwise indicated

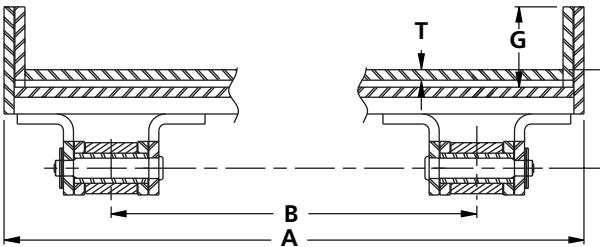
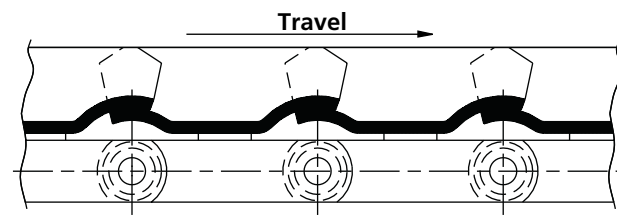
Chain Number	Pitch	Width ¹			Centerline Chain to Top of Pan Bead	Base Dimension	Pan Th.	Work Load (lbs) ²	Approximate Weight (lbs)		
		Overall	Center to Center Sprocket	Track Gauge					Conveyor Weight (ft.) 18" Pan ³	Approx. Wgt. Each 1" Added to Height	Weight Added Each 6" of Width
95R	4.000	21.88	19.38		2.00		4,200	24.2		3.8	
US-90R	4.000	21.44	19.56		2.00		4,800	28.0		3.8	
US-90R	4.000	21.44	19.56		2.06		4,800	33.7		5.1	
89R	4.000	23.94	20.06		2.06		9,000	44.3		5.1	
89R	4.000	23.94	20.06		2.31		9,000	50.0		6.4	
89R	4.000	23.94	20.06		2.38		9,000	55.7		7.7	
604R	6.000	23.00	19.81		2.19		7,000	27.0		5.4	
631R	6.000	24.19	20.13		2.25		11,200	43.0		7.2	
631R	6.000	24.19	20.13		2.31		11,200	48.6		9.0	
610R	6.000	24.81	20.44		2.88		14,900	59.6		10.8	



Style A OBR Aprons⁴ Specifications

All dimensions are inches unless otherwise indicated

Chain Number	Pitch	Width ¹			Centerline Chain to Top of Pan Bead	Base Dimension	Pan Th.	Work Load (lbs) ²	Approximate Weight (lbs)		
		Overall	Center to Center Sprocket	Track Gauge					Conveyor Weight (ft.) 18" Pan ³	Approx. Wgt. Each 1" Added to Height	Weight Added Each 6" of Width
961R	9.000	28.06	14.75	22.56	2.88	4.00	18,000	115.2	2.9	8.3	
2397R	12.000	27.25	15.19	21.81	3.75	4.00	18,400	92.5	2.6	7.5	
1706R	12.000	28.06	14.75	22.56	3.75	4.00	28,000	108.7	2.6	7.5	
2614R	12.000	27.69	14.19	22.06	4.25	4.00	35,000	157.1	2.6	7.5	
2614R	12.000	27.69	14.19	22.06	4.38	4.00	35,000	172.4	4.0	11.3	

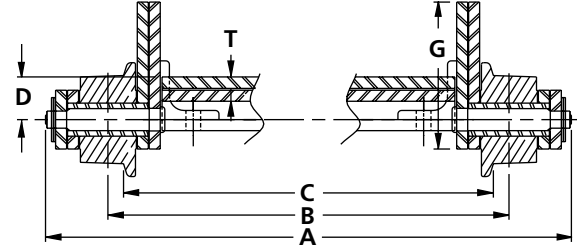
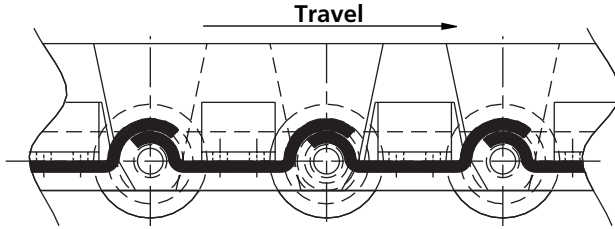


Style A FRS Aprons Specifications

All dimensions are inches unless otherwise indicated

Chain Number	Pitch	Width ¹			Centerline Chain to Top of Pan Bead	Base Dimension	Pan Th.	Work Load (lbs) ²	Approximate Weight (lbs)		
		Overall	Center to Center Sprocket	Track Gauge					Conveyor Weight (ft.) 18" Pan ³	Approx. Wgt. Each 1" Added to Height	Weight Added Each 6" of Width
961R	9.000	19.25	14.75 max.		2.88	4.00	18,000	61.5	2.9	8.3	
2614R	12.000	19.75	14.19 max.		4.38	4.00	35,000	76.6	4.0	11.3	

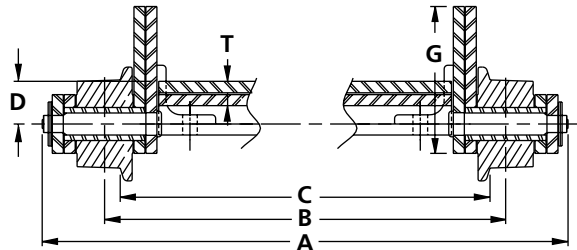
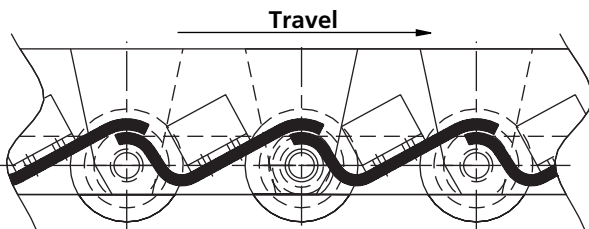
¹ All widths and weights are based on 18" apron pan widths. For weight est. refer to "Approximate Weight (lbs)" column for your specific conveyor width.
² Indicates working load for two strands of chain. ³ Indicates without through-rods. Refer to page 22 for rod weights.
⁴ OBR style can be furnished stub shaft every pitch or every second pitch depending on load criteria. All weights shown above are for OBR every pitch. Dimensions shown are nominal. Obtain certified prints for design and construction.



Style B Aprons Specifications

All dimensions are inches unless otherwise indicated

Chain Number	Pitch	Width ¹			Centerline Chain to Top of Pan Bead	Base Dimension	Pan Th.	Work Load (lbs) ²	Approximate Weight (lbs)		
		Overall	Center to Center Sprocket	Track Gauge					Conveyor Weight (ft.) 18" Pan ³	Approx. Wgt. Each 1" Added to Height	Weight Added Each 6" of Width
		A	B	C							
603R	6.000	23.69	20.75	20.13	1.06	3.50	.19	7,000	40.5	3.0	5.4
625R	6.000	24.63	21.16	20.31	1.06	3.50	.19	8,300	43.4	3.0	5.4
625R	6.000	24.63	21.16	20.31	1.13	3.50	.25	8,300	48.8	3.0	7.2
625R	6.000	24.63	21.16	20.31	1.19	4.00	.31	8,300	55.6	3.0	9.0
B-663R	6.000	26.38	22.13	21.13	1.13	3.50	.25	14,400	56.0	4.6	7.2
B-663R	6.000	26.38	22.13	21.13	1.19	4.00	.31	14,400	63.2	4.6	9.0
B-963R	9.000	26.38	22.13	21.13	1.38	4.00	.25	14,400	56.7	4.6	7.1
B-963R	9.000	26.38	22.13	21.13	1.44	4.00	.31	14,400	60.0	4.6	8.2
B-963R	9.000	26.38	22.13	21.13	1.75	4.00	.38	14,400	67.3	4.6	10.6
B-964R	9.000	26.88	22.44	21.19	1.44	4.00	.31	18,400	66.7	4.2	8.2
B-964R	9.000	26.88	22.44	21.19	1.75	5.00	.38	18,400	78.1	4.2	10.6
B-1263R	12.000	26.38	22.13	21.13	1.38	4.00	.25	14,400	53.1	3.8	7.0
B-1263R	12.000	26.38	22.13	21.13	1.44	4.00	.31	14,400	58.3	3.8	8.8
B-1263R	12.000	26.38	22.13	21.13	1.75	4.00	.38	14,400	63.6	3.8	10.5
B-1264R	12.000	26.88	22.44	21.19	1.44	4.00	.31	18,400	61.5	3.8	8.8
B-1264R	12.000	26.88	22.44	21.19	1.75	5.00	.38	18,400	70.6	3.8	10.5



Style D Aprons Specifications

All dimensions are inches unless otherwise indicated

Chain Number	Pitch	Width ¹			Centerline Chain to Top of Pan Bead	Base Dimension	Pan Th.	Work Load (lbs) ²	Approximate Weight (lbs)		
		Overall	Center to Center Sprocket	Track Gauge					Conveyor Weight (ft.) 18" Pan ³	Approx. Wgt. Each 1" Added to Height	Weight Added Each 6" of Width
		A	B	C							
625R	6.000	24.63	21.16	20.31	1.06	3.50	.19	8,300	43.4	3.0	5.4
625R	6.000	24.63	21.16	20.31	1.13	3.50	.25	8,300	48.8	3.0	7.2
625R	6.000	24.63	21.16	20.31	1.19	4.00	.31	8,300	55.6	3.0	9.0
B-963R	9.000	26.38	22.13	21.13	1.38	4.00	.25	14,400	56.7	4.6	7.1
B-963R	9.000	26.38	22.13	21.13	1.44	4.00	.31	14,400	60.0	4.6	8.2
B-963R	9.000	26.38	22.13	21.13	1.75	4.00	.38	14,400	67.3	4.6	10.6
B-964R	9.000	26.88	22.44	21.19	1.44	4.00	.31	18,400	66.7	4.2	8.2
B-964R	9.000	26.88	22.44	21.19	1.75	5.00	.38	18,400	78.1	4.2	10.6
B-1263R	12.000	26.38	21.13	21.13	1.38	4.00	.25	14,400	53.1	3.8	7.0
B-1263R	12.000	26.38	21.13	21.13	1.44	4.00	.31	14,400	58.3	3.8	8.8
B-1263R	12.000	26.38	21.13	21.13	1.75	4.00	.38	14,400	63.6	3.8	10.5
B-1264R	12.000	26.88	22.44	21.19	1.44	4.00	.31	18,400	61.5	3.8	8.8
B-1264R	12.000	26.88	22.44	21.19	1.75	5.00	.38	18,400	70.6	3.8	10.5

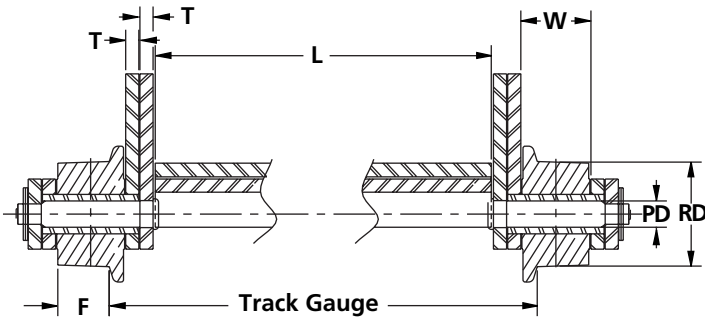
¹ All widths and weights are based on 18" apron pan widths. For weight est. refer to "Approximate Weight (lbs)" column for your specific conveyor width.

² Indicates working load for two strands of chain.

³ Indicates without through-rods. Refer to page 22 for rod weights.

Dimensions shown are nominal. Obtain certified prints for design and construction.

Apron Conveyor Dimensions for Chain with Single Flange Rollers Styles B & D Conveyors



Center to Center of Chain = $L + 4T + W + 3/16''$

Track Gauge = $L + 4T + 2k + 1/2''$

Center to Center of Sprocket = $L + 4T + 2k + F + 1/4''$

Overall Width = $L + 8T + 2W + 2c + 1/4''$

- Where:
- L** = Length of apron
 - T** = Thickness of sidebars (chain dimension)
 - W** = Inside width (chain dimension)
 - F** = Width or face of roller tread
 - k** = Constant for diameter of roller
 - c** = Constant for diameter of pin

Values of F and k

Roller Diameter RD	F	k
2.50	.88	.31
3.00	1.09	.41
3.00	1.25	.31
3.50	1.25	.56
4.00	1.25	.59
4.00	1.50	.59
5.00	1.75	.66
5.00	1.75 ¹	.72
6.00	1.88	.69
6.00	1.88 ¹	.81

Values of c

Roller Diameter PD	c
.56	.41
.63	.47
.75	.56
.88	.56
1.00	.69
1.13	.69
1.25	.69
1.50	.81

¹Indicates heavier wheel of same width or roller tread.

Apron Weights/Each Unassembled

All dimensions are inches unless otherwise indicated

Pitch	Thickness	Approximate Weight											
		18"	24"	30"	36"	42"	48"	54"	60"	66"	72"	78"	84"
3.000 ¹	.19	4.3	5.7	7.2	8.6	10.0	11.5	12.9	14.3	15.7	17.2	18.6	20.0
4.000 ¹	.19	5.8	7.7	9.6	11.5	13.4	15.3	17.3	19.2	21.1	23.0	24.9	26.8
4.000 ¹	.25	7.7	10.2	12.7	15.3	17.8	20.4	23.0	25.5	28.0	30.6	33.2	35.7
4.000 ¹	.31	9.6	12.8	16.0	19.2	22.4	25.6	28.8	31.9	35.1	38.3	41.5	44.7
4.000 ¹	.38	11.5	15.3	19.1	23.0	26.8	30.6	34.4	38.3	42.0	45.9	49.8	53.6
6.000	.19	8.1	10.8	13.5	16.4	19.0	21.7	24.4	27.1	29.8	32.5	35.2	38.0
6.000	.25	10.8	14.5	18.1	21.7	25.3	28.9	32.6	36.2	39.8	43.5	47.0	50.6
6.000	.31	13.6	18.1	22.6	27.1	31.6	36.2	40.7	45.2	49.7	54.2	58.8	63.3
6.000 ¹	.38	16.3	21.7	27.2	32.5	38.0	43.4	48.7	54.2	59.6	65.0	71.5	76.0
6.000 ¹	.50	21.7	28.9	36.1	43.4	50.6	57.9	65.0	72.3	79.4	86.6	93.9	101.0
9.000	.19	12.0	16.0	20.0	24.0	28.0	32.0	36.0	40.0	44.0	48.0	52.0	56.0
9.000	.25	16.0	21.2	26.6	31.9	37.2	42.5	47.9	53.2	58.5	63.8	69.0	74.5
9.000	.31	18.4	24.6	30.7	36.9	43.0	49.1	55.3	61.5	67.6	73.8	80.0	86.1
9.000	.38	23.9	31.9	39.8	47.8	55.8	63.7	71.7	79.7	87.7	95.7	103.6	111.6
12.000 ²	.19	15.8	21.0	26.3	31.6	37.9	42.1	47.4	52.6	58.0	63.2	68.5	73.8
12.000 ²	.25	21.1	28.1	35.1	42.1	49.1	56.1	63.1	70.1	77.1	84.1	91.1	98.1
12.000 ²	.31	26.3	35.1	43.9	52.6	61.4	70.2	79.0	87.7	96.5	105.2	113.9	122.7
12.000 ²	.38	31.6	42.2	52.7	63.2	73.8	84.4	94.8	105.2	115.9	126.3	136.9	147.5

¹Style A aprons only ²Style B aprons only

Steel Pan Ends

Chain Pitch	Thick. of Ends	Separate Steel Pan Ends Approximate Weight (lbs.)				
		Unassembled Height of End Above Center Line of Chain				
		2"	3"	4"	5"	6"
3.000	.19	.7	.8	.9	1.0	1.3
4.000	.19	.6	.8	1.3	1.5	1.7
4.000	.25	.8	1.1	1.7	2.0	2.3
6.000	.19	1.0	1.3	1.8	2.1	2.4
6.000	.25	1.4	1.9	2.4	2.9	3.3

Dimensions shown are nominal. Obtain certified prints for design and construction.

Through-Rod Weights

Chain Pin Dia.	Approximate Weight (lbs.)							
	Distance Between Centers							
	18"	24"	30"	36"	42"	48"	54"	60"
.63	1.6	2.1	2.6	3.0	3.7	4.2	4.7	5.2
.75	2.3	3.0	3.8	4.5	5.3	6.0	6.8	7.5
.88	3.1	4.1	5.1	6.1	7.1	8.1	9.1	10.1
1.00	4.0	5.4	6.7	8.0	9.4	10.7	12.0	13.4
1.13	5.1	6.8	8.5	10.2	11.8	13.5	15.2	16.9
1.25	6.3	8.4	10.4	12.5	14.6	16.7	18.8	21.9
1.50	9.0	12.0	15.0	18.0	21.0	24.0	27.0	30.0