

Welded Steel Drag Chain

Promac Welded Steel Drag Chain is your answer for a long wearing chain to convey or drag product through its full process. The product being conveyed can be abrasive because of the heat treatment and material used on Promac Chain will allow the chain to have long wear life.



These chains match the best combination of:

- Raw Material
- Press Fits
- Heat Treatment
- Quality Control Procedures

Welded Steel Drag Chain Interchange

Promac #	Rex #	Jeffrey #	US Tsubaki #	Allied Locke #
WD-102	WD-102	WSD-102	WD-102	***
WD-104	WD-104	WSD-104	WD-104	WD-104
WD-110	WD-110	WSD-110	WD-110	WD-110
WD-112	WD-112	WSD-112	WD-112	***
WD-113	WD-113	***	WD-113	***
WD-116	WD-116	WSD-116	WD-116	***
WD-480	WD-480	WSD-480	WD-480	WD-480

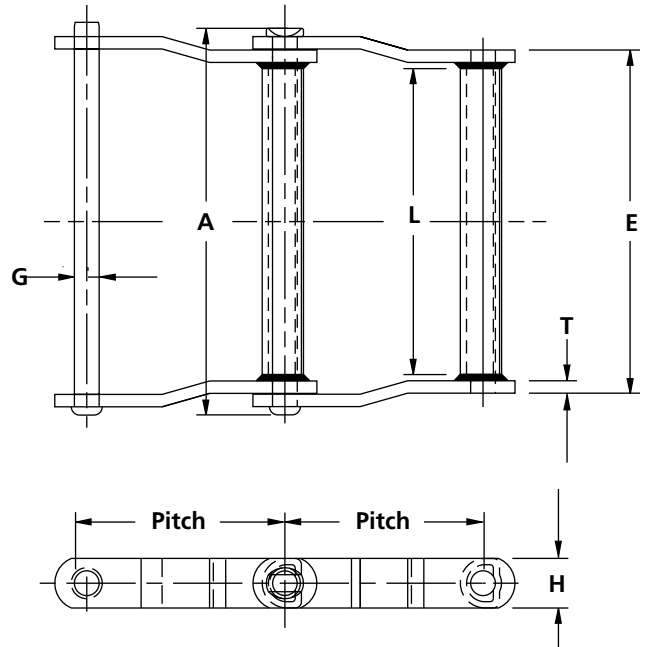


Welded Steel Drag Chain

Promac welded steel chain is designed and manufactured to withstand punishing shock loads and abrasive conditions.

Key qualities are:

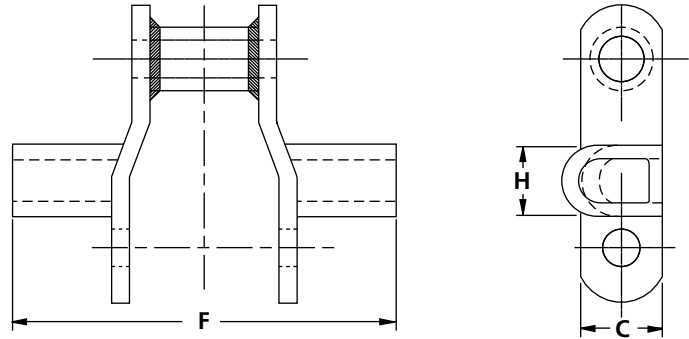
- Barrels are manufactured from high-strength steel and welded to sidebars using automatic welding equipment.
- The rivet pins are swedged with a very generous head. This allows for longer wear when being used in an enclosed area that sees abrasion from rubbing.
- Chains are available with a variety of attachments and ideally suited for field welding.



Welded Steel Drag Chain Specifications

All dimensions are inches unless otherwise indicated

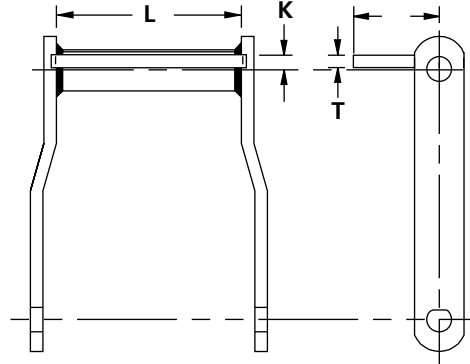
Chain Number	Pitch	Chain Width		Barrel	Pin	Sidebars		Average Ultimate Strength (lbs.)		Maximum Work Load (lbs.)		Approx. Weight (lbs./ft.)
		Overall	Length of Bearing	L	Diameter	Thickness	Height	Heat Treated Pins	Chain Heat Treated	Heat Treated Pins	Chain Heat Treated	
		A	E					T	H			
WD-102	5.000	9.25	7.75	6.38	.75	.38	1.50	46,000	60,000	8,500	10,000	11.8
WD-104	6.000	6.88	5.38	4.13	.75	.38	1.50	46,000	60,000	8,500	10,000	8.7
WD-110	6.000	11.88	10.38	9.00	.75	.38	1.50	46,000	60,000	8,500	10,000	12.0
WD-113	6.000	12.50	10.63	9.00	.88	.50	1.50	52,000	68,000	9,300	11,700	15.0
WD-112	8.000	11.88	10.38	9.00	.75	.38	1.50	46,000	60,000	8,500	10,000	9.8
WD-116	8.000	15.38	14.13	12.75	.75	.38	1.75	60,000	80,000	10,700	11,500	14.5
WD-480	8.000	14.63	12.75	11.00	.88	.50	2.00	94,000	100,000	12,300	15,000	18.1



"C" Style Attachment Specifications

All dimensions are inches unless otherwise indicated

Attachment Number	Chain Number	Dimensions			Approx. Wgt. (lbs./ft.)
		C	F	H	
C STYLE CRADLE	WH132	3.00	11.0	3.00	29
C STYLE CRADLE	WH150	3.00	11.0	3.00	31
C STYLE CRADLE	WH155	3.00	11.0	3.00	34



C1 Attachment Specifications

All dimensions are inches unless otherwise indicated

Attachment Number	Chain Number	Dimensions				Approx. Wgt. (lbs./ft.)
		H	K	L	T	
C1 WIDE SERIES	WDH102	1.50	0.38	6.38	0.38	15
C1 WIDE SERIES	WDH104	2.38	0.38	4.13	0.38	11
C1 WIDE SERIES	WDH110	2.38	0.38	9.13	0.38	17
C1 WIDE SERIES	WDH112	2.38	0.38	9.13	0.38	14
C1 WIDE SERIES	WDH116	2.63	0.38	12.75	0.38	20

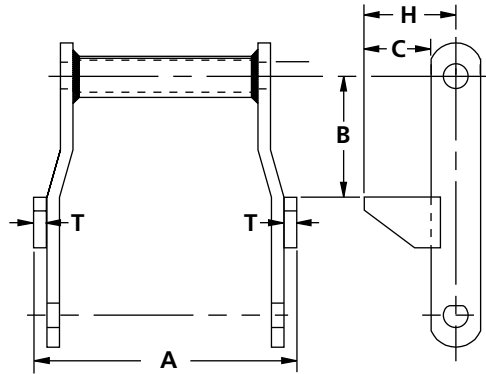
C3 Attachment Specifications

Attachment Number	Chain Number	Dimensions				Approx. Wgt. (lbs./ft.)
		H	K	L	T	
C3 WIDE SERIES	WDH113	2.25	0.50	9.13	0.50	19
C3 WIDE SERIES	WDH480	3.00	0.50	11.13	0.50	26

C4 Attachment Specifications

Attachment Number	Chain Number	Dimensions				Approx. Wgt. (lbs./ft.)
		H	K	L	T	
C4 WIDE SERIES	WDH102	3.75	0.38	6.38	0.38	18
C4 WIDE SERIES	WDH104	3.75	0.38	4.13	0.38	12
C4 WIDE SERIES	WDH110	3.75	0.38	9.13	0.38	21
C4 WIDE SERIES	WDH112	3.75	0.38	9.13	0.38	17
C4 WIDE SERIES	WDH113	4.75	0.50	9.13	0.50	28
C4 WIDE SERIES	WDH116	4.88	0.38	12.75	0.38	25
C4 WIDE SERIES	WDH480	5.00	0.50	11.13	0.50	33

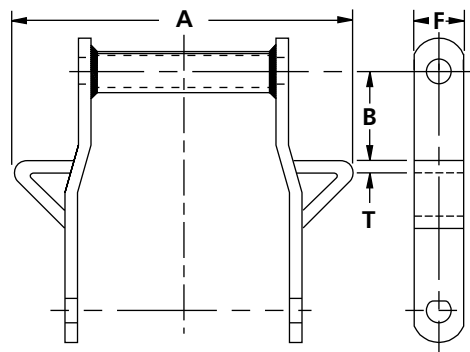
Dimensions shown are nominal. Obtain certified prints for design and construction.



RR Attachment Specifications

All dimensions are inches unless otherwise indicated

Attachment Number	Chain Number	Dimensions					Approx. Wgt. (lbs./ft.)
		A	B	C	H	T	
RR WIDE SERIES	WDH102	9.25	1.25	1.75	2.50	0.38	13
RR WIDE SERIES	WDH104	6.94	3.00	1.75	2.50	0.38	9
RR WIDE SERIES	WDH110	11.94	3.00	1.75	2.50	0.38	14
RR WIDE SERIES	WDH112	11.94	3.00	1.75	2.50	0.38	12
RR WIDE SERIES	WDH113	12.69	3.00	1.75	2.50	0.50	16
RR WIDE SERIES	WDH116	15.69	3.00	2.25	3.13	0.38	17
RR WIDE SERIES	WDH480	14.88	3.00	2.25	3.25	0.50	21



WING (Wide) Attachment Specifications

All dimensions are inches unless otherwise indicated

Attachment Number	Chain Number	Dimensions				Approx. Wgt. (lbs./ft.)
		A	B	F	T	
WING WIDE SERIES	WDH102	14.38	1.75	1.50	0.38	15
WING WIDE SERIES	WDH104	11.50	2.75	1.50	0.38	11
WING WIDE SERIES	WDH110	17.00	2.63	1.50	0.38	16
WING WIDE SERIES	WDH112	17.00	3.25	1.50	0.38	13
WING WIDE SERIES	WDH113	17.00	2.50	1.50	0.50	17
WING WIDE SERIES	WDH116	22.00	3.25	1.75	0.38	18
WING WIDE SERIES	WDH480	22.00	3.25	2.00	0.50	25

Dimensions shown are nominal. Obtain certified prints for design and construction.